



“An economic investment in education is an investment for life, with many times the return to the community.”

The Wenatchee Rotary Foundation

The mission of the Wenatchee Rotary Foundation (WRF) is to improve educational opportunities for residents living in the Greater Wenatchee area. Funding for the WRF is through immediate and deferred giving from current and past Wenatchee Rotary Club members and others in the community.

Wenatchee Rotary Club Membership

The Wenatchee Rotary Club is a 501(c)4, Social Organization under Internal Revenue Service rules. The Club conducts business meetings, sponsors informational programs and hosts social events for members.

Each Club member in good standing is also a member of the Wenatchee Rotary Foundation (WRF), which is an IRS 501(c)(3) Charitable Organization. The Wenatchee Rotary Foundation is the charitable and fund-raising entity for the Rotary Club of Wenatchee.

Every Rotarian is also a member of Rotary International. The Rotary Foundation (TRF) supports many worthy causes world-wide.

Funding and Scholarships

Since the establishment of the Wenatchee Rotary Foundation in 1980, the Foundation has awarded numerous student scholarships and supported various projects in the community deemed worthy of funding. Three separate funds have been established by the WRF: the Operating Fund (to conduct operations without accessing the Invested Corpus), Pass Through Funds (for fundraising purposes) and the Invested Corpus. WRF funds are maintained in partnership with the Community Foundation of North Central Washington and invested according to the policies of the Community Foundation of North Central Washington.

WRF supports academic programs where students are enrolled in formal educational and/or degree-oriented programs through the award of renewable scholarships to high school students in the Wenatchee area for enrollment at Wenatchee Valley College and other higher education institutions and technical schools. The Operating Fund pays the cost of the annual scholarships.

Paul Scea Fellowship

The WRF established an honor known as the Paul Scea Fellowship, awarded to persons who contribute at least \$500 to the WRF Invested Corpus. Paul Scea was a member of the Wenatchee Rotary Club with more than 50 years of service. He was a major donor to the WRF and the Rotary Foundation. As an alternative to a one-time gift to the WRF, a person may also be referred to as a Paul Scea Sustaining Fellow, if they make annual gifts of at least \$50 with the intent to complete a total gift to the WRF of at least \$500.



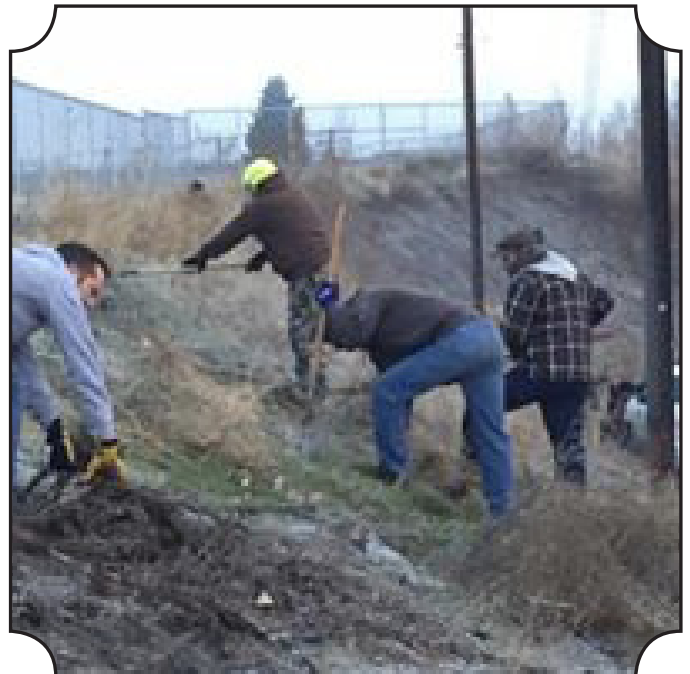
**For nearly 100 years the Wenatchee Rotary Club has made a difference.
We are proud of many accomplishments.**

We promote peace, provide food and shelter, fight disease, provide clean water, save mothers and children and support education; built Rotary Park on Western Avenue in partnership with the two other Wenatchee-based Rotary clubs; supported the Niles Saunders Wenatchee Riverfront Railway miniature train in Wenatchee Riverfront Park; financed the lights on the Walla Walla Point Park ball fields; refurbished the rooms in the Bruce Transitional Housing for residents; serve as role models for elementary school students through the Lunch Buddy program at Lewis & Clark Elementary; currently provide scholarships to eight Wenatchee Valley College students.

Over the last two years the Foundation financially helped local causes including: south end youth and families Dream Team project, Wenatchee High School Interact Club, Foothills Middle School state champion robotics team, Harvest Food Distribution, North Central Education Foundation for innovative classroom programs, Girls on the Run of Columbia Valley partnering with Columbia Valley Community Health, YMCA Partners with Youth camp, playground equipment for Lewis & Clark Elementary, and donated \$7,500 for COVID-19 relief through Serve Wenatchee.



“Together we see a world where people unite and take action to create lasting change — across the globe, in our communities, and in ourselves.”



Contributions and the Legacy Society

The Rotary Club of Wenatchee encourages members and others in the community to contribute to the WRF. A suggested amount of \$100 annually from each member helps achieve our mission.

Supporters of the WRF enable Wenatchee Rotarians to build on the legacy of service and excellence begun nearly 100 years ago, and will ensure its impact for generations to come.

Ways to give:

- Charitable gift
- Donor designated project gift
- Planned gift to WRF Legacy Society (see attached form)

By making a bequest directed to the Wenatchee Rotary Foundation Invested Corpus, your gift contributes to a solid funding base that will benefit the Foundation's mission in perpetuity.

***Remember when you leave this Earth,
you can take with you nothing that you have received.
Only what you have given.***

Attachment:

Wenatchee Rotary Foundation Legacy Society Membership Form



Wenatchee Rotary Foundation
PO Box 1723 Wenatchee WA 98807
WenatcheeRotaryFoundation@gmail.com

Wenatchee Rotary Foundation

Legacy Society Membership Form



Name(s) _____ Address _____

Primary Phone _____ Alternate Phone _____

Birthdate (optional) _____ Email _____

I have made or intend to make a legacy gift to the "**Wenatchee Rotary Foundation**" as indicated below:

- _____ Will (Please designate: **Wenatchee Rotary Foundation**)
- _____ Life Insurance Policy or Retirement Plan Beneficiary Designation
- _____ Trust in which Wenatchee Rotary Foundation is named as beneficiary. Please indicate when the Foundation's interest will take affect. (Example: "Income to my spouse, then principal to Wenatchee Rotary Foundation")
- _____ Deferred Gift (i.e. Charitable Gift Annuity, Pooled Income Fund, Charitable Remainder Trust, Charitable Lead Trust, etc.) Please contact the WRF President to discuss.
- _____ Other (description) _____

Estimated amount of gift: \$ _____ or _____ % of estate, policy or account.

Optional: Please enclose a copy of the pertinent section of your document mentioning Wenatchee Rotary Foundation as a beneficiary. We will retain this in our confidential files as a record of your intention.

Congratulations! Your gift qualifies you for membership in our Legacy Society. We are honored to recognize you in our Legacy Society material unless you indicate otherwise.

_____ Please list my/our names as follows: _____

_____ I / we wish to remain anonymous _____

Name Signature Date

Name Signature Date