



# Leadership Training Opportunity

## ELIBIGLE

### PARTICIPANTS

- Ages 18-25
- High School Graduate
- Demonstrated leadership potential

## WHEN

June 28 - July 5, 2025

## LOCATION

University of Idaho  
Moscow, Id, USA

*\*Canadian attendees  
require a valid passport*

## CONTACT DETAILS

### Canada:

**Stacey Cassidy**  
(250) 442.7211  
director@ryla5080.org

### US:

**Bryton Turner**  
(208) 818.0562  
director@ryla5080.org

**Process:** *Return completed application to your local Rotary Club. Once approved they will forward your application to director@ryla5080.com where payment instructions will then be sent.*



*\*Rotary Club Sponsor Fee:  
\$800 before May 31, 2025.  
\$850 beginning June 1, 2025*

The Rotary Clubs of District 5080 (WA, ID and BC) offer an intensive leadership training program for young people aged 18-25. The program incorporates, through a number of excellent presenters, challenging small and large group work and interaction with approximately 40 other young adults. It provides opportunities to discover and strengthen leadership skills in an encouraging environment.

Topics covered include:

- Awareness of self/others
- Group Dynamics
- Dealing with Conflict/Change
- Goal Setting
- Styles of Leadership
- Characteristics of Effective Leaders
- Effective Communication
- Group Dynamics
- Critical Thinking
- Ethical Frameworks
- Personal Mission Statement
- Networking
- Rotary's Purpose and Community Involvement

For more than 40 years Rotary District 5080 has funded and hosted the RYLA (Rotary Youth Leadership Award) camp in order to encourage young adults in their leadership and personal development. The camp offers attendees a wide range of leadership and presentation styles as well as providing opportunities to discover more about themselves and others.

This is a great opportunity for businesses and organizations to provide initial training for potential leaders or recognize top employees in your employ. Similar corporate leadership training is estimated to cost more than \$2,000. If you add in the cost of travel, food and accommodation it could be considerably more.

This incredible opportunity is provided absolutely **FREE through the generosity of sponsoring Rotary Clubs in your Community.**

As all the camp expenses are underwritten by Rotary, many businesses and organizations have allowed their employees leave with pay to attend.

If you are interested in investing in the career of a deserving employee, please contact your local Rotary Club (contact information is included on this flyer) or the RYLA contacts listed on the left side of this page.





# Rotary



# RYLA 5080

## RYLArian TESTIMONIALS

*"It was a phenomenal week of self-discovery, growth and learning about many skills important to every aspect of life."*

*"My life has been greatly enriched, both personally and professionally."*

*"RYLA taught me that anything you set your mind to, you can achieve, no matter what anybody thinks."*

*"I learned about the practicalities of leadership; the day-in day-out details and responsibilities that need attending to, and how a team of leaders working together can overcome all sorts of obstacles."*

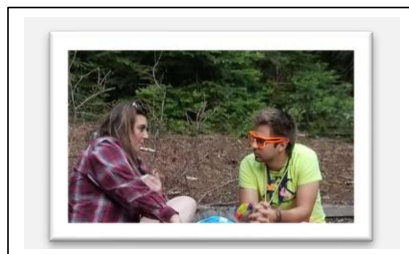
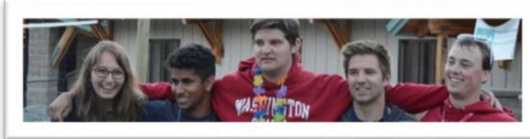
*"The experience overall, and the things I learned combined to make the experience one of the best weeks of my life."*

*"I learned that a true leader teaches others and is a role model for them, while encouraging and mentoring them to become great leaders themselves."*



### Employer Testimonial:

**"...our employee returned from her week at RYLA with a noticeably enhanced sense of self confidence. Her coworkers have responded to her role as a leader in the worksite. Perhaps of greater importance, she discovered a new sense of the importance of "Service above Self" from her experience."**



### Employer Testimonial:

**"We referred a student who worked with us over the summer to RYLA. It helped him decide his future path, which included a college degree, work in a not-for-profit organization that serves homeless people, and a future plan to work in community policing"**

### Sponsoring Rotary Club Contact Information

Newport-Priest River Rotary Club

PO Box 2305, Priest River, ID 83856

Brad Mingay 208 448 2875  
[bmingay@conceptcable.com](mailto:bmingay@conceptcable.com)

**\*Applications/nominations must be submitted to the local club by:**

**Monday, May 12, 2025**