

El Rio Youth Mental Health Services – Mission of Hope

John Fung, MBA, CFRE
Major Gifts Officer
&
Brenda Goldsmith
Executive Director

EL RIO
HEALTH



About Us

History

1970 - Opened in October

- ❖ Serving patients as El Rio Santa Cruz Neighborhood Health Center

1971 - A Federally Qualified Health Center

- ❖ Organization that receives a grant under section 330 of the Public Health Service.

1974 - A Non-for-Profit

- ❖ Managed by a Community Board of Directors – CEO/Executive Director and Senior Staff.

A Nationally Recognized Organization

2010 - Current: Joint Commission Accreditation

- ❖ El Rio is accredited for Behavioral Health, Ambulatory, Diagnostic Laboratory Services, and a Patient Centered Medical Home (PCMH)

2010 - National Committee for Quality Assurance (NCQA)

- ❖ El Rio is recognized as a Patient Centered Medical Home (PCMH)

2015-Current - Healthcare Equality Index (HEI)

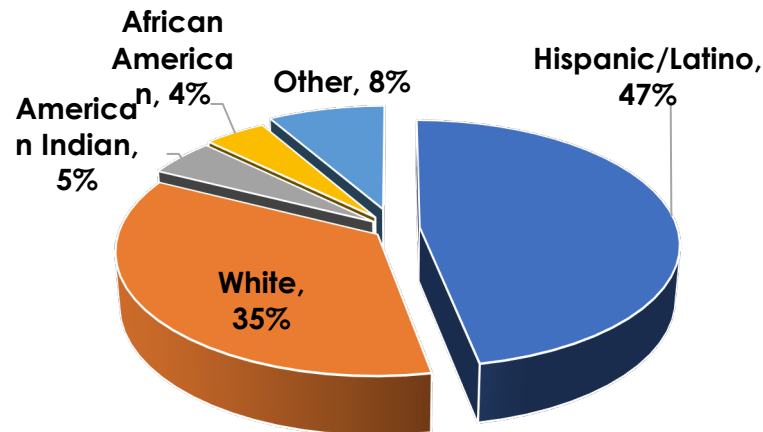
- ❖ El Rio is recognized as (Gold Status) leaders in LGBTQ Healthcare Equality Index

Our Practice

2022 UDS Submitted Data

- ❖ Total # of Patients Served: 125,449
- ❖ Total Patient Visits: 455,139
(380,596 In-person/74,543 Virtual)

El Rio Patients by Race/Ethnicity



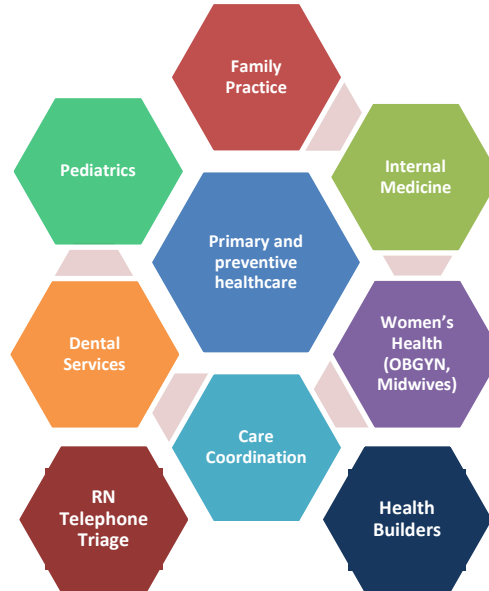
- Hispanic/Latino
- White
- American Indian
- African American
- Other

Patients by Payer Source

- ❖ Medicaid: 49%
- ❖ Private: 21%
- ❖ Uninsured: 17%
- ❖ Medicare: 13%

- ❖ 37% of patients 100% and below the Federal Poverty Line

Our Programs



- Occupational Health
- Physical Therapy & Sports Medicine
- Buena Vida Chronic Pain Program
- Medication-Assisted Treatment
- Reproductive Health Access Project
- LGBTQ Services/Transgender Medicine
- SAAHEC

Laboratory

Radiology & Mammography

Advanced Practice Pharmacists

Integrated Behavioral Health

Pharmacy Services

HIV
Homeless
Hepatitis C

El Rio Health Center

- Established in 1970
- Foundation formed in 2021
- Over 125,000+ served in 2022
- Over 496,971 visits in 2022 at 14 campuses
- 1800+ staff members
- Students: Medical, Dental, Nursing, Public Health, Residents and MPH Interns

Services Offered

- Adult Medicine
- Family Medicine
- Pediatrics
- Dental
- Radiology & Lab
- Health Builders
- Reproductive Health
- Special Immunology

Services Offered

- Care Coordination & Nurse Triage
- Community Resources
- Midwifery
- Pharmacy
- WIC
- Telehealth
- Physical Therapy
- Behavioral Health – Adult & Youth

The Need

- National Institute of Mental Health (NIMH) states 13% of US children ages 8-15 are diagnosed with mental disorder
- Children living in poverty increases to 22% who have a mental, behavioral, or development disorder
- El Rio Health serves 13,218 (ages 12-17) enrolled in medical services.

The Need

- In 2021, we screened over 10,000 children, ages 12+ for depression and 23% screened positive for depression, which led to a decision to start planning to launch a new youth behavioral health services pilot program.
- There are limited resources for mental health for children/youth in Tucson.
- Almost non-existent if youth do not have health insurance or have a high deductible health plan.

Mission of Hope

- The 1st six months of 2022 were writing policies, procedures, recruiting, hiring, training staffs, developing referral systems, workflows.
- June 2022 – Received license by the Arizona Department of Health Services for Pediatric Behavioral Health Services

Behavioral Health Operations

- Specialty Behavioral Health staff providing comprehensive outpatient behavioral health services at six health center locations. Primary Care Behavioral Health Consultants deliver integrated on-site chronic disease care, management and crisis triage services embedded with primary care across El Rio.

Behavioral Health Services Include:

- Psychiatric Services
- Psychotherapy
- Intensive Outpatient Program
- Medication Assisted Treatment (MAT)
- Peer Recovery Support Services
- Case Management
- Pediatric Behavioral Health Program

Behavioral Health Staff Include:

- Behavioral Health Medical Professionals
 - *Psychiatrists, Psychiatric Nurse Practitioners
- Behavioral Health Professionals
 - *LCSWs, LPCs, LISAC, LMSWs, LACs, LBA
- Behavioral Health Technicians
 - *Case Managers
- Behavioral Health Para-Professionals
 - *Peer Recovery Support Specialists
- Nursing Staff
 - *RNs, LPNs, MAs
- Support Staff
 - *MORs



EL RIO
HEALTH

The Team

- One Child Psychiatrist
- Two Psychiatric Nurse Practitioners
- Two and a half Behavioral Health Therapists
- Two Case Managers
- One Medical Assistant
- Over 50% of the team is bi-lingual

Outpatient Services:

- Treatment Services
 - Assessment
 - Evaluation
 - Screening
 - Individual counseling/therapy
 - Family counseling (with or without member)
 - Group counseling

Outpatient Services:

- Medical Services
 - Psychiatric Evaluation
 - Psychiatric medication
 - Medication assisted management

Outpatient Services:

- Support Services
 - Case management
 - Family support services
 - Translation services

Outpatient Services

- Rehabilitation Services
 - Skills Training
 - Psychosocial rehabilitation services
 - Living skills training
 - Health promotion
 - Psychoeducational services

Outpatient Services

- Crisis Intervention Services
 - Telephonic crisis intervention services

El Pueblo Health Center

- Goal: 200 – 300 youths for the 1st year
- Results: Provided care for 634 youth through May 2023

Youth Stories



Youth Stories



Opportunities & Needs

- Currently serve 22,932 children, ages 6-17
- Support needed to recruit, hire and fund more child therapists, case managers to serve more youth
- Averaging 25-35 referrals per week
- Team huddles every morning to triage the highest acuity cases
- To build a Behavioral Health Center of Excellence



QUESTIONS

Thank You!

- John.fung@elrio.org
- Brendag@elrio.org
- <https://elrio.org/foundation/donate/>