



ShelterBox

Leo Lawrenson
D5500 ShelterBox Ambassador



Rotary



SHELTERBOX IS A REGISTERED CHARITY INDEPENDENT OF ROTARY INTERNATIONAL AND THE ROTARY FOUNDATION.



SHELTERBOX
HERO
GOLD

2022-2023 GOLD HERO AWARD
RECOGNIZING THE OUTSTANDING
DEDICATION AND SUPPORT OF

**Rotary Club of
Oro Valley**

Thank you for enabling this
lifesaving work.

Kerri Murray



ShelterBox

Rotary



District 5500

*It started with
People of Action
The Power of Rotary*



2000

ROTARY CLUB OF HELSTON LIZARD

Rotary



1999 The Rotary Club of Helston Lizard made it their Millennial Project to provide a specialized shelter solution following disaster

2000 the organization ShelterBox was established

2012 ShelterBox was named Rotary International's Global Project Partner in Disaster Relief

2022 Rotary International and ShelterBox continue to partner to shelter families around the globe



RECOGNITION





CUSTOM
DESIGNED
FAMILY TENT

TOOL KIT

DURABLE
PLASTIC BOX

WATER
CONTAINERS

THERMAL
FLEECE
BLANKETS

COOKING
EQUIPMENT

WATERPROOF
GROUNDMATS

HAT, GLOVES
AND SCARF

MOSQUITO
NETS

THIRST AID STATION
WATER FILTRATION

LUMINAID
SOLAR LIGHT

CHILDREN'S
ACTIVITY PACK



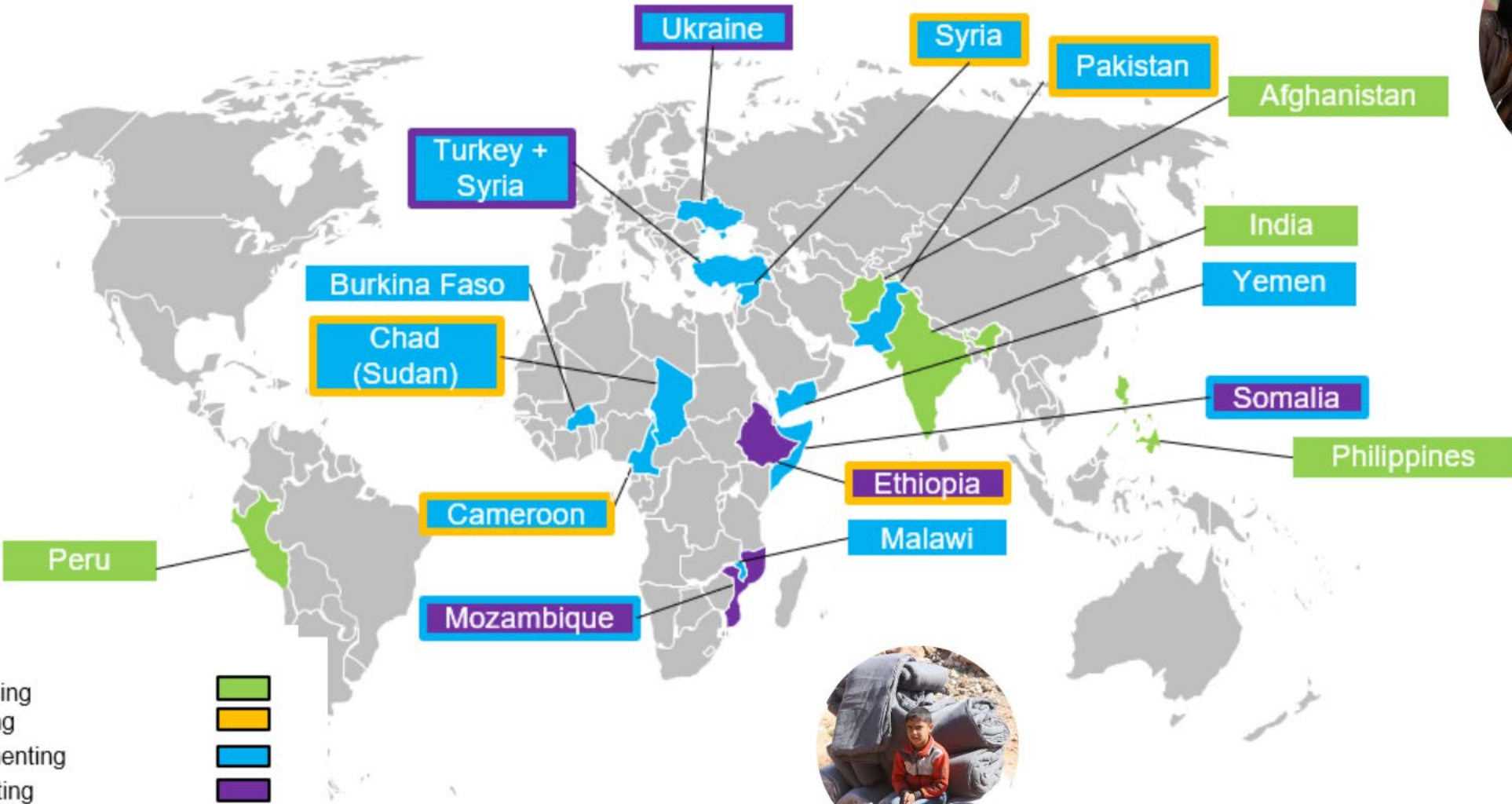


ShelterBox



**WE'VE RESPONDED TO MORE THAN 300 DISASTERS
IN OVER 100 COUNTRIES.**

CURRENT DEPLOYMENTS



- Key:**
- Assessing
 - Planning
 - Implementing
 - Evaluating





PAKISTAN

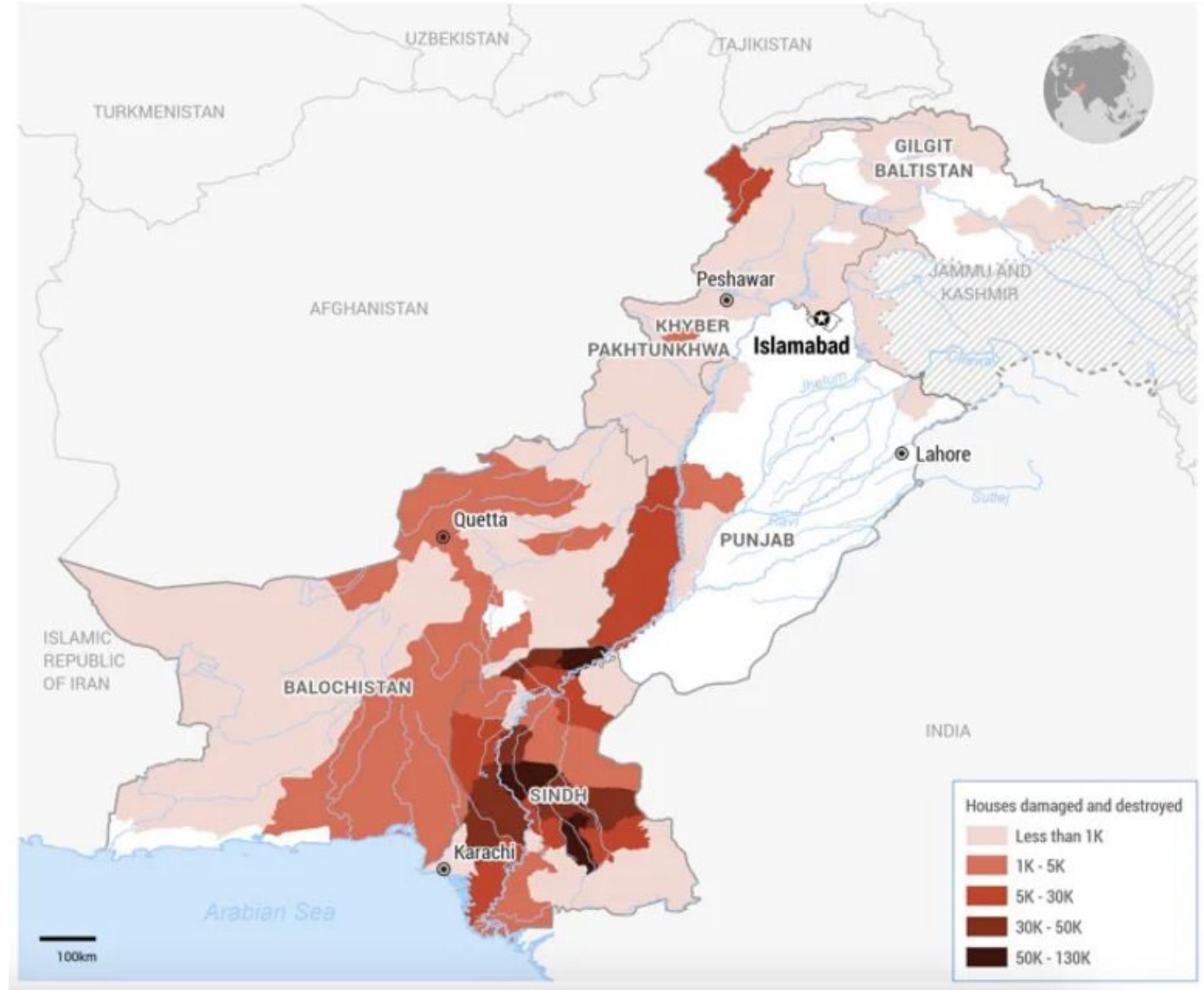
Flooding

Since mid-June 2022, **Pakistan has been overwhelmed by severe monsoon rains and flooding affecting both areas in the North and South of Pakistan.**

Over 110 districts have been declared 'calamity hit' by the Government.

It is estimated that **33 million people have been affected by the flooding** as of late August.

Almost 1 million people have been displaced





PAKISTAN

Flooding

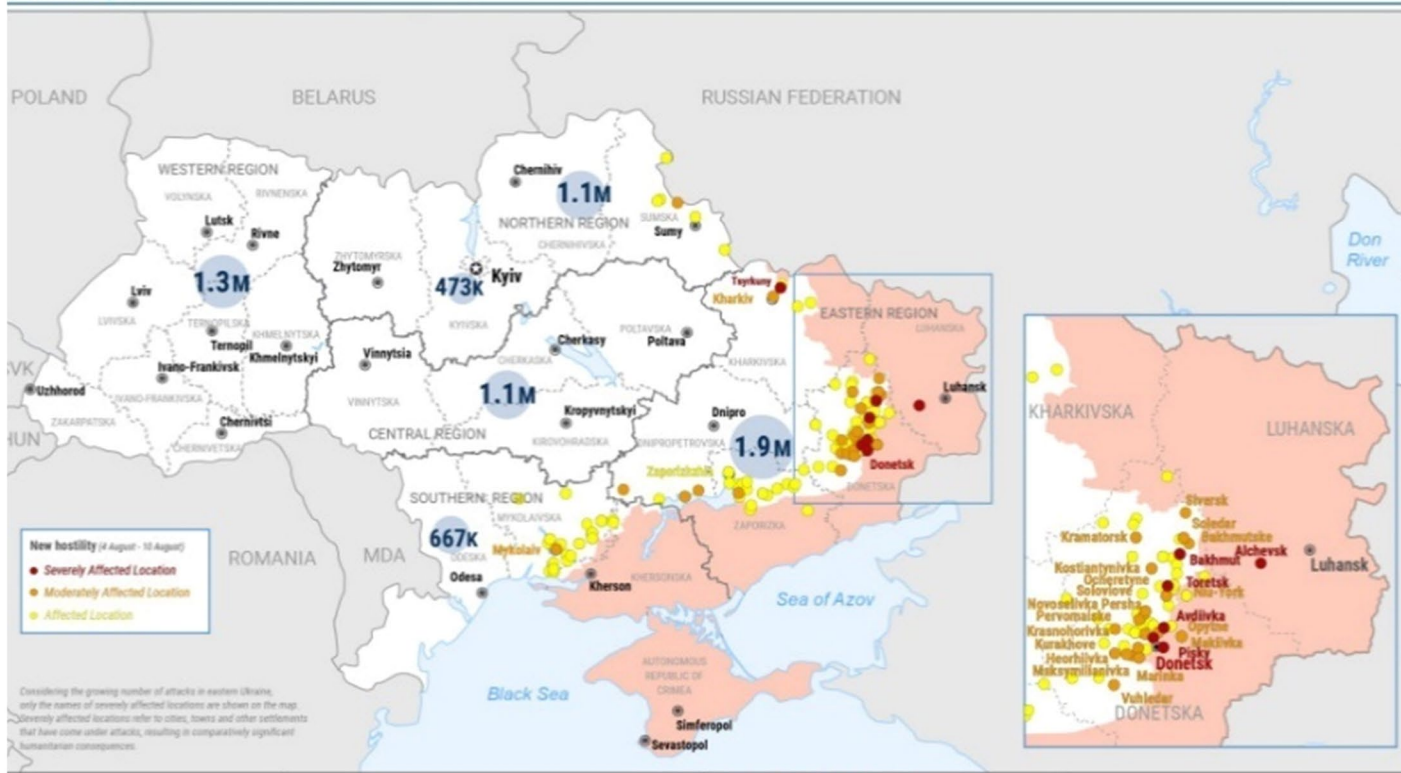
- ShelterBox is assisting families impacted by contributing to the self-recovery process of **1,200 families** in flood affected Pakistan through timely distribution of appropriate shelter and essential household items.
- ShelterBox will also be providing cash assistance and a winterized aid packages to another **5,000 households**.
- A third project in process that will provide durable disaster risk and resilient one-room shelters and latrines to approx. **500 families**.

Item	#
ShelterBox Relief tent	1200
Jerry Can, 10L	2400
Grifaid water filter	1200
Bucket with lid	1200
LuminAID PackLite Nova	2400
Mosquito Net Permanent 3.0	2400
Tarpaulins	1200
Rope	1200
Blankets	6000
Mattresses	3600
Floor / Ground Mats	1200



UKRAINE

SITUATION OVERVIEW - 10 August 2022



6.4 M Individual refugees from Ukraine recorded across Europe

6.6 M Internally displaced people

● Internally displaced persons

○ Country capital

○ Oblast/region capital

Areas outside the control of the Government of Ukraine

Macro-Region Boundary

Total Strikes by Oblast

Donetska	130	Sumska	6
Mykolaivska	40	Donets'koprovska	6
Zaporizka	23	Luhanska	1
Kharkivska	10		

Sources: *Heatlines* public sources, IDPs: IOM, Refugees: UNHCR, *Adverse Incidents*: UNICEF and State Scientific Production Enterprise "Kartographia", *Areas outside the control of the Government of Ukraine*: Institute for the Study of War and ACT's Civil Threats Project. *Inset map* omits affected city names to maintain visual clarity.

The boundaries and names shown and the designations used do not imply official endorsement or acceptance by the United Nations.

UKRAINE

Conflict



On February 24th, 2022, Russia's President Putin launched a major military operation in Ukraine.

The current conflict is destroying and damaging homes and causing mass displacement.

As of August 10th, 2022, it is estimated that **over 6.6 million people are now displaced** within the country.



UKRAINE

Conflict



Through spring and summer of 2022, we provided **12,000 mattresses for collective centers.**

We distributed **shelter kits with tools and rope, high thermal blankets, hygiene kits, solar lights and water carriers to help 6,000 families.**

We are supported refugees **in Moldova** with high priority items they can carry with them, like **hygiene items and cash.**

In winter, we conducted a winterized distribution of **household items, shelter solutions, and/or stoves and firewood** to a total of **5,000 families.**

We are working on our next project that will support another **6,000 families.**



Ethiopia, Complex Emergency, 2022

ETHIOPIA

Ethiopia remains characterized by ongoing conflict, insecurity, and the effects of climate change; this has caused many displacements and drives humanitarian needs.

*Across the country, **over 20 million people** are in need of humanitarian support.*





ETHIOPIA

Complex Emergency, History of ShelterBox Response

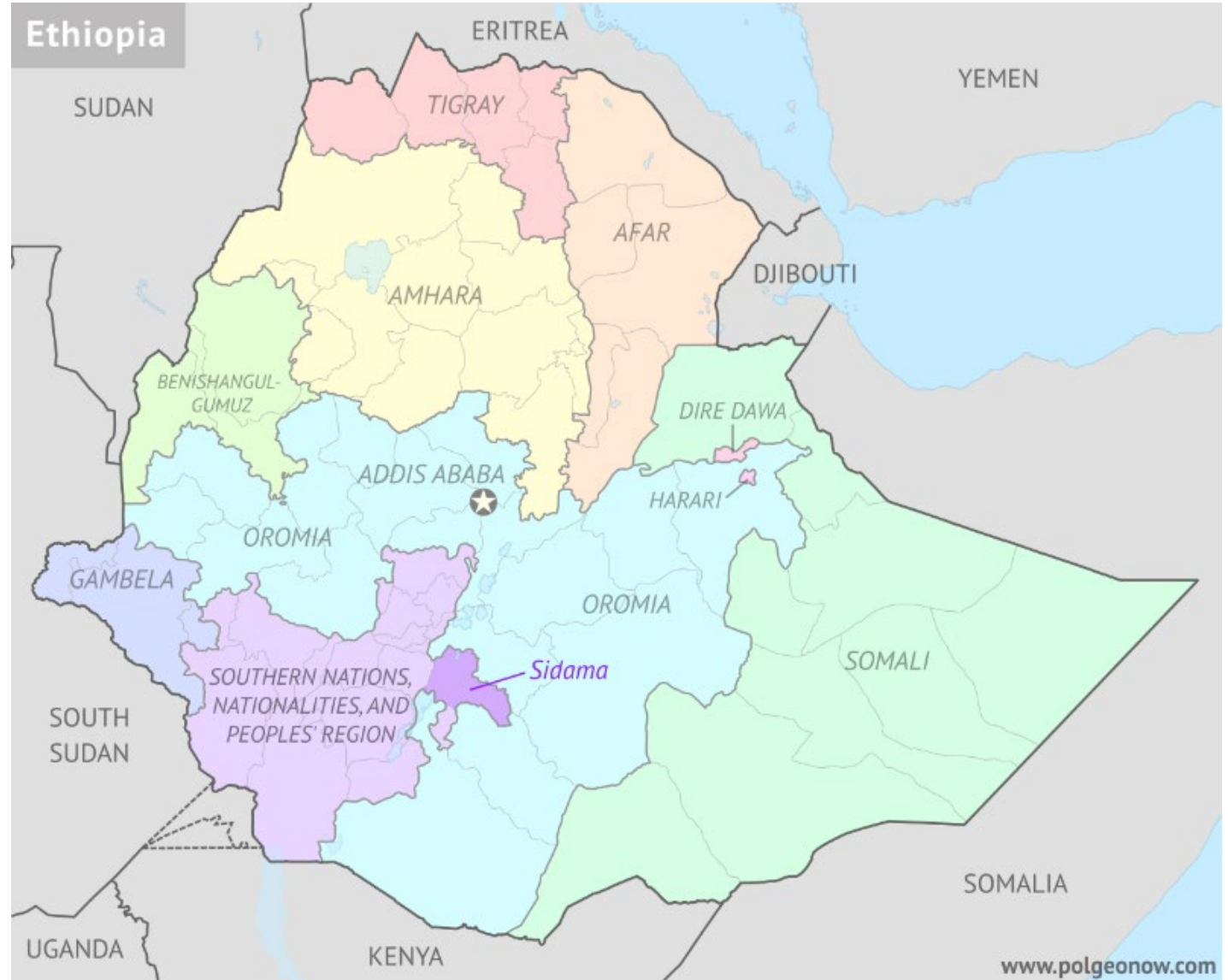
Project	Year	Aid	Households Sheltered / Assisted
Project 1 - Phase A	Feb 2019	- Tarpaulins & rope - Household Items	1,995 HHs sheltered
Project 1 - Phase B	Sept 2019	- Tarpaulins & rope - Household Items	1,500 HHs sheltered
Project 2	Jan 2020	- Tarpaulins & rope - Household Items	1,100 HHs sheltered
Project 3	Aug 2020	- Tarpaulins & rope - Household Items - Soap (COVID-19)	3,500 HHs sheltered
Project 4	Jan-Oct 2021	- Tarpaulins & rope - Household Items Hygiene Items & soap (COVID-19)	HH sheltered: 3,600 HH assisted: 750 Total HH: 4,350



ETHIOPIA

Complex Emergency

We are currently working on our next distribution, **serving 12,000 of the most vulnerable displaced families in Ethiopia**





BURKINA FASO

Violent extremism has been ongoing for several years in this region of West Africa. However, until recently, Burkina Faso was the exception, known for religious tolerance and social harmony. But in recent years that has changed with spreading violence by Islamist militants and several other militia groups that are destroying the social fabric and turning communities against each other.



BURKINA FASO

Conflict



In 2022, the number of people in need of shelter and essential household items is estimated at 1.5 million

New waves of displacement following the second coup d'état on September 30th in the affected regions. In the Centre Nord region, over 13,000 people were newly displaced.



BURKINA FASO

Conflict, History of ShelterBox Response

Project	Year	Aid	HHs Sheltered	HHs Assisted	Households supported
Pilot Project 1	Aug 2020	Tarpaulins and household items	600HH	600HH	500HH
Project 2	Jan 2021	Tarpaulins, HHI, Hygiene Items	700HH	NA	NA
Project 3	May 2021	Tarpaulins, HHI, Hygiene Items	1,800	NA	NA



BURKINA FASO

Conflict 

We are currently serving **another 1,000 newly displaced families.**

Nongoma and her seven children are just one of the thousands of families who fled the violence. They have been living in a camp for internally displaced people since December 2019.

CAMEROON

The Far North Region of Cameroon is impacted by the ongoing Lake Chad Basin crisis, with multiple causes of displacement and shelter need.

*As of June 2022, violence in the Far North has uprooted **641,000 people** including. Minawao Camp, one of the largest in the country, was initially opened in 2013 to host 35,000 refugees fleeing insecurity in Nigeria. However, that number has now more than doubled*





CAMEROON

Conflict, History of ShelterBox Response

Project	Year	Aid	Households supported
Project 1	2015	Tents with household items	224 HHs sheltered
Project 2	2015	Tents with household items	1,000 HHs sheltered
Project 3	2016	Tents with household items	800 HHs sheltered
Project 4	2016	Tents with household items	1,012 HHs sheltered
Project 5	2017 /18	Tents with HH items, shelter kits with household items, semi-permanent shelters with household items, hygiene kits	4,050 HHs sheltered
Project 6	2019	Tents with HH items, shelter kits with household items	800 HHs sheltered
Project 7	2019	Tents with HH items, shelter kits with household items, tarpaulins and ropes and additional household items for people with additional vulnerabilities	1,907 HHs sheltered, 1,210 HHs assisted
Project 8	2020	Tents with HH items, shelter kits with household items, tarpaulins and ropes and additional household items for people with additional vulnerabilities	3,088 HHs sheltered, 657 HHs assisted
Project 9	2021	Tents with HH items, shelter kits with household items, tarpaulins and ropes and additional household items for people with additional vulnerabilities	4,659 HHs sheltered, 881 HHs assisted
Project 10	2022	Tents with HH items, shelter kits with household items, tarpaulins and ropes and additional household items for people with additional vulnerabilities	5285 HHs sheltered, 993 HH assisted



CAMEROON

Conflict

In our next distribution,
ShelterBox aims to **serve
another 9,800 families.**



MOZAMBIQUE

Mozambique faces diverse challenges that have created a complex humanitarian crisis for which the country is under-resourced and under-equipped to respond. Since 2017, the armed group, known as Ahlu Sunna Wal Jama has increased violations against civilians.

*There are an estimated **946,508 people** who left their homes, up from 784,000 reported in April 2022.*





MOZAMBIQUE

Conflict



In our first distribution, ShelterBox was able to **shelter 4,044 households** and **assist another 1,691 households** with Shelterkits and essential household aid items.

We are currently working on our next project that will aim to serve **another 6,000 families.**

NIGERIA

Nigeria faces a complex humanitarian crisis, with many contributing factors: the Boko Haram insurgency in the North-eastern states; 'banditry' violence in the Northwest; farmer/pastoralist conflict in the Middle Belt; and a growing Cameroonian refugee population in the south.

2.9 million people are in need of shelter.





NIGERIA

Conflict, History of ShelterBox Response

Project	Year	Aid	Households supported
Project 1	2018	Locally procured shelter kits and household items	765 HHs sheltered
Project 2	2018	Locally procured shelter kits and household items	1,205 HHs sheltered
Project 3	2019	Locally procured shelter kits and household items	499 HHs sheltered
Project 4	2019	Locally procured shelter kits and household items	1,263 HHs sheltered and 677 HHs assisted
Project 5	2020/1	Locally procured shelter Kits and household items	1,933 HHs sheltered.
Project 6	2022	Locally procured 'Bama' shelters and household items	1,000 HHs sheltered



NIGERIA

Conflict

In our next distribution,
ShelterBox aims to **serve
another 2,000 families.**



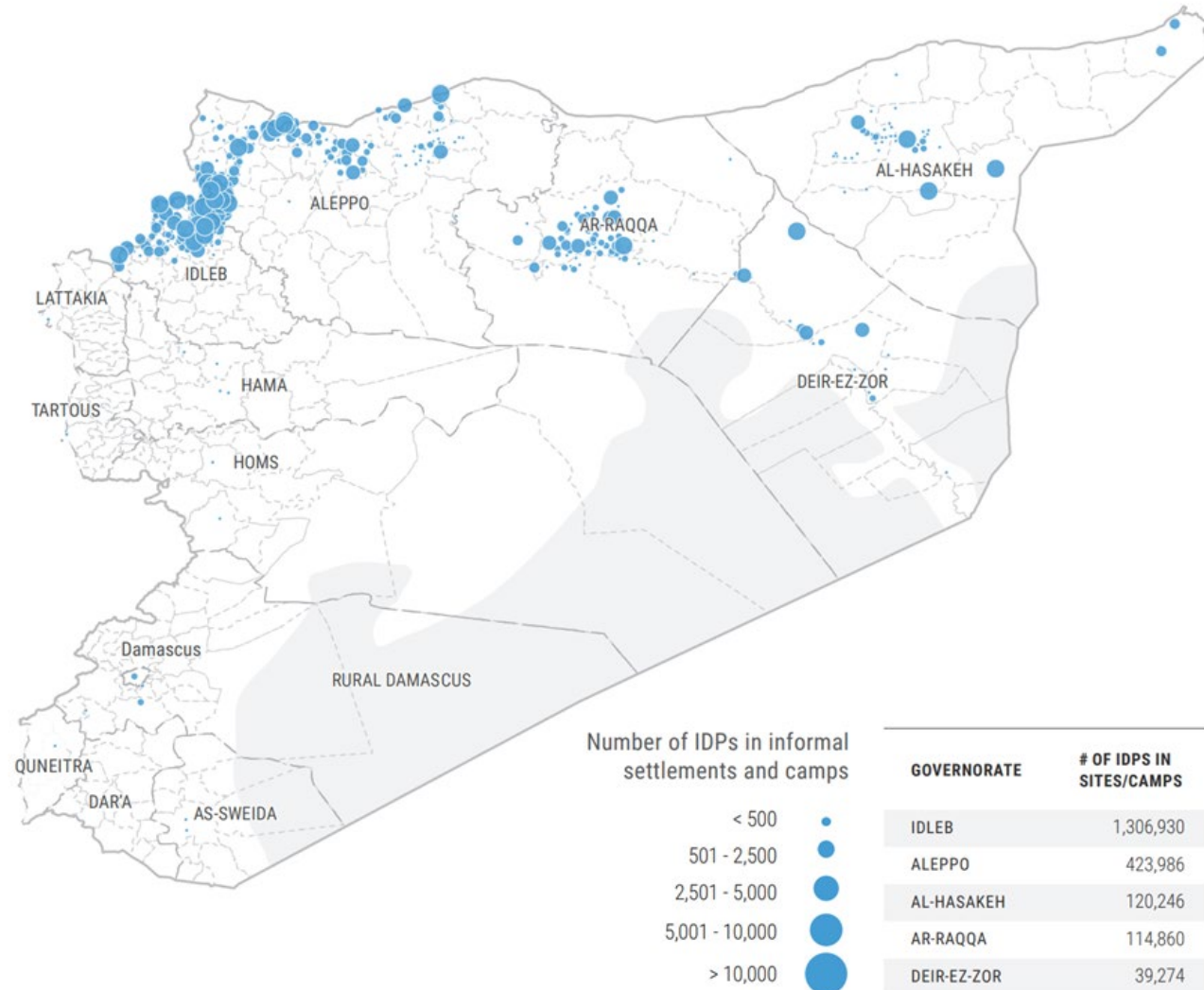
SYRIA

*The Syria conflict has been ongoing since March 2011, when peaceful anti-government protests descended into violence. The conflict has caused the displacement of over half the population of pre-war Syria with **5.6 million people seeking refuge** in neighboring countries and **6 million internally displaced people**.*



IDPs in Informal Settlements and Camps

by community



SYRIA

Conflict



The Syrian crisis has been ShelterBox's largest and most sustained response in our history. **More than 13 million people have been displaced** by the conflict.

More than 420,000 people in the region have received ShelterBox aid since we first responded to the crisis in December 2012.

We are currently working on our winterized distribution supporting **4,000 new families.**

YEMEN

More than seven years of armed conflict in Yemen has caused tens of thousands of civilian casualties, uprooted millions, destroyed the economy and disrupted basic services. It remains one of the world's largest humanitarian crises and aid operations.

***4.3 million people have been internally displaced since
2015***





YEMEN

Conflict



In our first distribution, ShelterBox was able to **serve 1,305 households** with tents, tarps, rope, and other essential household aid items.

We are working on our next project that will aid to serve over **2,000 families.**

SOMALIA

‘Decades of conflict, recurrent climate shocks, disease outbreaks and increasing poverty are devastating the people of Somalia. Despite progress in recent years, the compounding impacts of these shocks continue to erode coping strategies and undermine resilience against future crises.’

A total of 7.7 million Somali women, men and children are estimated to require humanitarian assistance in 2022.’

**Source: Somalia Humanitarian Overview 2022*





SOMALIA

Complex Emergency



We are seeking to pilot an emergency shelter and household item intervention in response to the Horn of Africa Drought.

We are working on our plans for this project.

OTHER LOCATIONS

- *We are assessing **Peru**, **Afghanistan** and **India** due to flooding.*
- *The **Philippines** is being assessed due to Tropical Storm activity.*
- *We are assisting families in **Chad** due to the Sudan Refugee Crisis.*
- *We are supporting families in **Malawi** due to flooding there.*





\$250 Gives a complete Cooking Set

Reduces sharing between families and the chance of catching or transmitting COVID-19.



\$100 Gives a complete Shelter Kit

Tarps and tools help a family repair and expand their home to safely social distance.



\$1000 Gives a complete ShelterBox

Contains emergency shelter and essential household items a family needs to stay safe and healthy.



\$500 Gives a family tent for shelter

Helps a family move out of evacuation or collection centers and allows them to isolate.



\$30 Gives Solar Light

Gives a family light after dark to be able to cook, work, wash, and more.



\$20 Gives Soap and a Basin

Improves a family's ability to maintain good hygiene and stay healthy.



A ShelterBox HERO is a Rotary Club who has committed to making an impact in worldwide disaster response.

HERO Clubs provide sustainable income that allows ShelterBox to stay prepared for upcoming disasters.

BE A HERO

You can be a HERO!

Donate \$1000, \$3000, or \$5000 as a HERO gift. Give your gift today or fundraise throughout the Rotary Year.

BRONZE



SILVER



GOLD



shelter

BOX