



THE MAGIC OF ROTARY

Jerry Nolen, District Governor 2024-2025

Message from Our Governor

Fellow Rotarians,

Thank you for the work you are doing in your communities and the world to make the lives of others better. Without your efforts, there would be people in your communities and the world who would not sleep in a bed, who may suffer from anxiety about where their next meal is, or how to feed their children. Without Rotarians, there would be more people who live without clean water, who would suffer the effects of disease or worry about how to protect their children from the harmful diseases that can be easily prevented, especially Polio and Malaria. You are People of Action! Please continue to "Do Good" for others.

District Governor Elect Ralph Zuke, District Governor Nominee Luke Kehoe, Past District Governors Margie Sammons, Rick Tinucci, Dave Robinette, Stacey Self, and I attended the Rotary District Zones 30 and 31 Institute and Conference early in September. This was a fantastic opportunity to meet and exchange ideas with Rotarians, some of whom have a lot of experience and many from other states.

We heard inspiring messages from some of the senior leaders of Rotary International including President Stephanie Urchick, General Secretary John Hewko, Past International President Mark Maloney, Past International President John Germ, and Akira Miki who serves as a Trustee of the Rotary Foundation.

Among the topics were membership, both recruiting new members and retaining our current members, the Rotary Foundation, Polio eradication efforts, and peace building efforts throughout the world. In addition to Rotary Leaders, we heard messages from:

Darla Silva, Chief Global Programs Officer of UNICEF USA on "The Power of Partnership: UNICEF and Rotary". She highlighted the longstanding partnership between Rotary and UNICEF and how UNICEF works to reach the

- most disadvantaged children and adolescents. She emphasized that UNICEF's efforts are to protect the rights of children - everywhere.
- Marcia Lindstrom, the Strategic Communications Manager for NASA's Space Launch System, the SLS (America's rocket that is being designed to carry humans to the Moon and on to Mars). I have never heard a speaker with as much enthusiasm about any topic as Ms. Lindstrom.
- Miquette McMahon, Executive Director of TeachHaiti, spoke to us about her journey from a young girl in Haiti to her Rotary Youth Exchange experience, and how it allowed her to achieve her dream of becoming a nurse before having a greater effect on her home county of Haiti. This article, [Akron Beacon Journal Article describing the journey of Miquette McMahon](#) is a brief glimpse into her life and the effect of Rotary on her life and that of many who have benefitted from her experience.

Please continue your efforts to "Grow Rotary" by exploring the formation of new clubs to make the Rotary experience irresistible for people to join the Rotary Family that cannot or do not want to belong to a traditional Rotary Club. However, we must also keep our clubs appealing to our existing members. Membership growth should be on the mind of every Rotarian in our district. The more members we have, the more impact we can have on our communities and the world.

I enjoyed meeting some of you during the District Governor visits to your clubs and I look forward to attending the rest of our District's clubs over the next several months. If you have any questions or suggestions that you would like to discuss, please feel free to contact me.

Continue to make "The Magic of Rotary" happen in your communities and the world.

Jerry

\$2 Anti-Malaria Bed Nets Save Lives

- 625,000 people in tropical climates die of malaria every year
- 70% of malaria victims are children under age 5
- Malaria is the #1 killer of pregnant women in tropical developing countries
- 240,000,000 people suffer from non-fatal cases of malaria every year

Rotary International is a leader in the global effort to eradicate malaria. Eight District 6060 clubs have joined the fight against malaria by purchasing 1870 anti-malaria bed nets with club funds and/or grant funds in just the first two months of this Rotary year. The \$2 anti-malaria bed nets have been the most popular of the ten international projects promoted this year by District 6060.

And there's more good news about the impact we're having. Economists say that for every \$1 invested in the fight against malaria, there's a \$40 economic benefit. That economic benefit accrues when healthy kids attend school; when healthy adults can go to work and be productive; and when there's less burden on already scarce medical resources. The \$3740 from our clubs' purchases of anti-malaria bed nets equates to \$149,600 in economic benefit to vulnerable communities in developing countries!

Your club can join the fight against malaria. To participate in this impactful, affordable, and easy international project contact International Service Chair Sue Cobb at rotarysuecobb@gmail.com or 626-284-4686.



NEW ROTARY CLUB FORMATS

Here is some information about some new club formats created by Rotary members who were filling the need for a new club experience and allowed their members to stay engaged. This was one of the topics at the Zones 30 and 31 Institute during the first week in September.

Cause-based

- Rotary Satellite Club of Kansas City-Plaza Working for Veterans, MO: <https://www.rotary.org/en/service-veterans-satellite-clubs-cause>
- Rotary Club of Twin Cities Eco, MN: <https://blog.rotary.org/2019/04/16/rotary-ecoclub-offers-diversity-variety/>

Service-based

- Rotary Club of Chicago Citywide Service, IL: <https://www.facebook.com/rotarychicagocitywide/>
- IMPACT clubs: <https://www.impactclubs.org/about/about-impact>

Corporate

- Rotary Club of Gold Coast Corporate, Australia: <https://www.rotary.org/en/competitors-community>

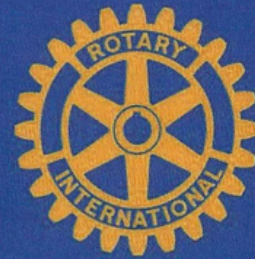
Districtwide Online

- Rotary Club of Activate Victoria, Australia: <https://blog.rotary.org/2024/04/18/district-wide-online-clubs-offer-easy-entry-into-rotary/>
- Rotary Club of Pathways, OH: <https://www.facebook.com/pathwaysrotary.org/>
- Rotary Club of Northeast Ohio, OH: <https://www.facebook.com/RotaryEClubNEO/>

International

- Rotary Club of Southport International, IN: <https://www.rotary.org/en/community-spirit>
- Rotary Club of Chicagoland Lithuanians, IL: <https://www.rotary.org/en/rotary-club-keeps-ties-lithuania>

ROTARY CONTACTS: AREAS OF EXPERTISE *Who Does What?*



TEAM	AREA OF EXPERTISE	CONTACT
ROTARY SUPPORT CENTER English, French, Spanish Monday to Friday 08:00-17:00 Chicago time	<ul style="list-style-type: none"> • Assistance with all Rotary questions • Connections to other Rotary teams • Easily accessible first point of contact • My Rotary account questions • The Rotary Foundation: Donations, recognition 	rotarysupportcenter@rotary.org +1-847-866-3000 +1-866-9-ROTARY +1-866-976-8279
AWARDS	Citation and awards questions: Interact, Rotaract, Rotary	riawards@rotary.org
CLUB AND DISTRICT SUPPORT (CDS)	<ul style="list-style-type: none"> • Governor funding, nominations, training • Policy (<i>why</i>) & procedure (<i>how</i>) guidance • Adult harassment • Club & district strategy • <u>Diversity, equity, and inclusion</u> • <u>Operations: Incorporations, IRS, mergers, name changes, new clubs, resignations, satellite clubs</u> • Regional expertise • Rotaract 	Your <u>CDS officer</u> or cds@rotary.org
DATA SERVICES	Additions, changes, removals of club or district data, magazine preferences, members, officers	data@rotary.org
FINANCE	Club adjustments, billing, invoices, reinstatements Find out more about club invoices	clubinvoice@rotary.org
GRANTS	Disaster relief and grants	grants@rotary.org
HERITAGE COMMUNICATIONS	Archives, historical files, pre-digital-era resources	history@rotary.org
MEMBERSHIP DEVELOPMENT	Specialized advice on <i>growing</i> your membership	membershipdevelopment@rotary.org
RI REGISTRATION	Registration for the convention & International Assembly	riregistration@rotary.org
RISK MANAGEMENT	Insurance for U.S.-domiciled clubs and districts	insurance@rotary.org
YOUTH PROGRAMS	Please use the corresponding inbox:	interact@rotary.org ryla@rotary.org youngleaders@rotary.org

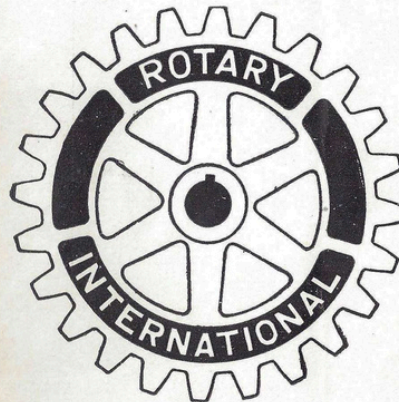
Rotary History

Visit CAPE GIRARDEAU

MISSOURI'S CITY BEAUTIFUL

Points of HISTORIC INTEREST and CIVIC BEAUTY

- ★ FAIRGROUND PARK
Cape Girardeau's recreation center and community headquarters for the entire district.
- ★ COURT HOUSE PARK
Surrounding the historic Common Pleas Court House, the City Hall and the Public Library.
- ★ CAPE ROCK PARK
Where the first white men probably crossed the Mississippi and where the town gets its name.
- ★ UTILITIES PARK
A lovely suburban supper ground near the water plant for company employees and the public.
- ★ RIVER FRONT PARK
One of the most attractive developments of the kind on the entire Mississippi River.
- ★ DENNIS SCIVALLY PARK
A suburban picnic and recreation ground, quite out of the ordinary in several respects.
- ★ FORT A
Civil War base, providing wonderful view of downtown district and the Mississippi River.
- ★ STATE COLLEGE
Said to be one of the most carefully developed school plants of its kind in the United States.
- ★ HOUCK STADIUM
One of the most ornate and modern athletic and recreation plants to be seen anywhere.
- ★ OLD ST. VINCENTS
One of the first colleges established West of the Mississippi River and still rendering service.
- ★ COUNTRY CLUB
Overlooking the Mississippi and one of the nicest golf grounds to be found in Missouri.
- ★ CAPE ROCK DRIVE
A well planned township boulevard skirting the northern and western limits of Cape Girardeau.
- ★ BROADWAY JUNCTION
Designated in the 1936 State Highway Yearbook as the most beautiful one in Missouri.
- ★ FORT D
Civil War defense which has been transformed into community center by the American Legion.



A cordial invitation is extended to the Rotary Clubs of the 135th District to hold their annual conference in 1939 in Cape Girardeau.

THE ROTARY CLUB OF CAPE GIRARDEAU
THE JUNIOR CHAMBER OF COMMERCE
THE CHAMBER OF COMMERCE
THE CITY ADMINISTRATION
THE OPTIMIST CLUB
THE LIONS CLUB

A Hearty Welcome *Always* Awaits You in Missouri's City Beautiful

Cape Girardeau is picturesquely located on the Mississippi River 131 miles south of St. Louis on U. S. Highway 61 and State Highways 34 and 74. Thus it is easily accessible whether by boat, train, bus, or motor. A \$1,600,000 traffic bridge dedicated in 1928 connects Cape Girardeau with Illinois.

Cape Girardeau is a growing City of 18,000, maintaining a building activity that few cities have enjoyed. Industrial expansion and the increase of residence building has been constant.

Established in 1793 as a Spanish trading post by Louis Lorimier, the town derived its name from Ensign Seur Girardot, applied to a trading post that was established in the Big Bend which formed a cape in the river above the city.

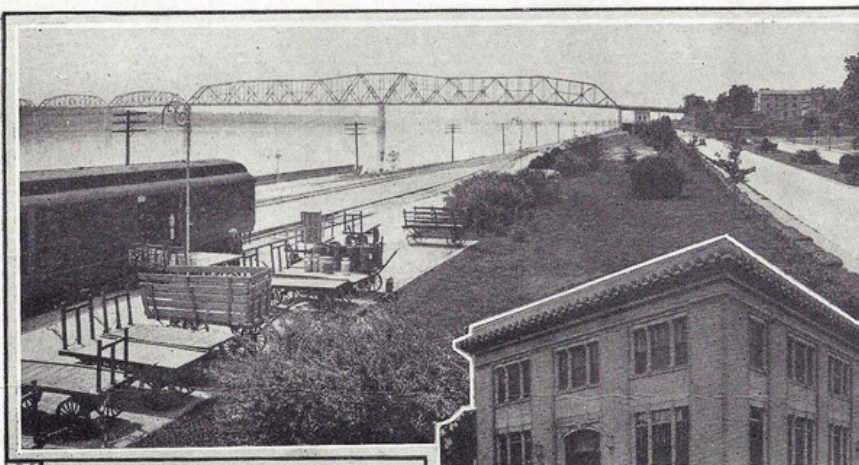
The hospitality of Cape Girardeau is reflected in its hotels, recently expanded to offer ample facilities for conventions and rallies. Beauty, comfort, and consideration for the visitors' well-being are traditional in Cape Girardeau. Cape Girardeau is the metropolis of Southeast Missouri, the shopping center of an area of more than 300 miles.

Cape Girardeau's public and mercantile buildings are distinguished for their beauty as well as their utility. Outstanding examples are the Southeast Missouri Telephone Co., the new enlarged Marquette Hotel and the Southeast

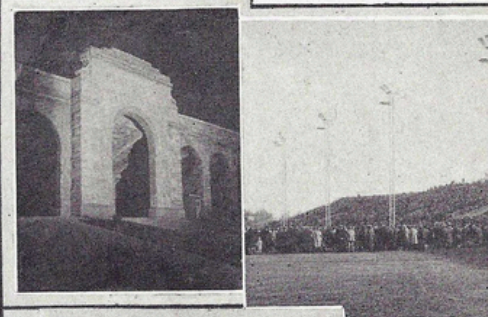
Missourian Building. The Federal building, an impressive structure of grey limestone houses the Post Office and the U. S. Circuit Court. The Carnegie library has an ideal location in the beautiful court house park and houses a large collection of books. The Common Pleas Court House is a fine example of Colonial architecture and situated as it is on a commanding site overlooking the river, with an approach from the East of 59 steps, attracts a great deal of attention.



Common Pleas Court House



Cape Girardeau's river front and traffic bridge over the Mississippi.



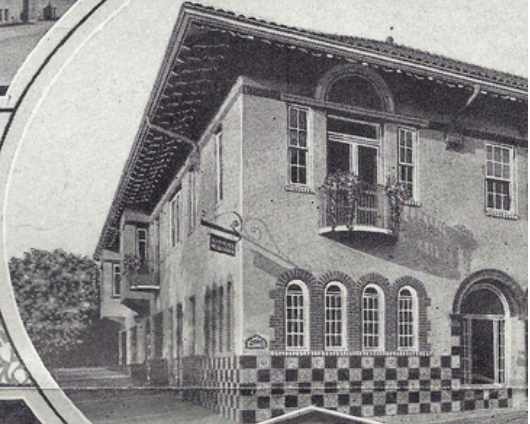
Houck Stadium and athletic field of the Southeast Missouri State Teachers College.



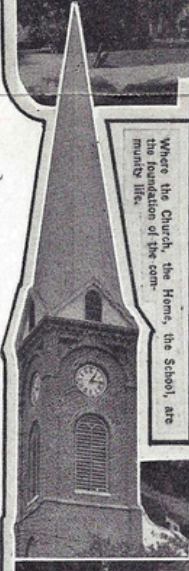
Southeast Missouri Telephone Company Building.

Back yard of The Missourian Building.

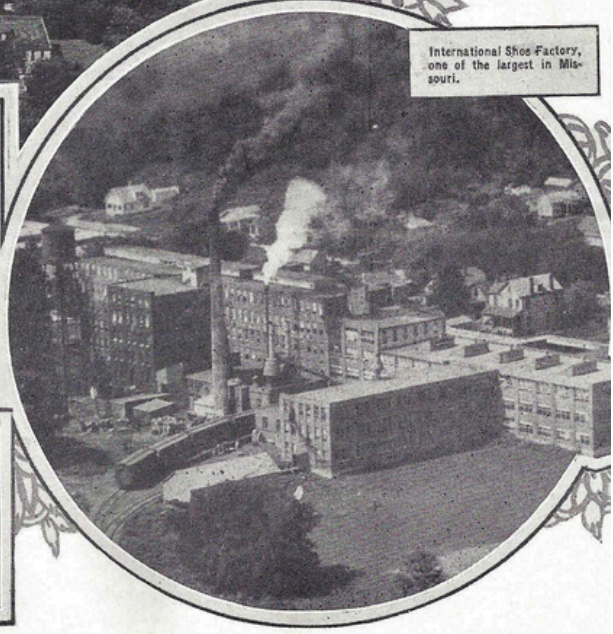
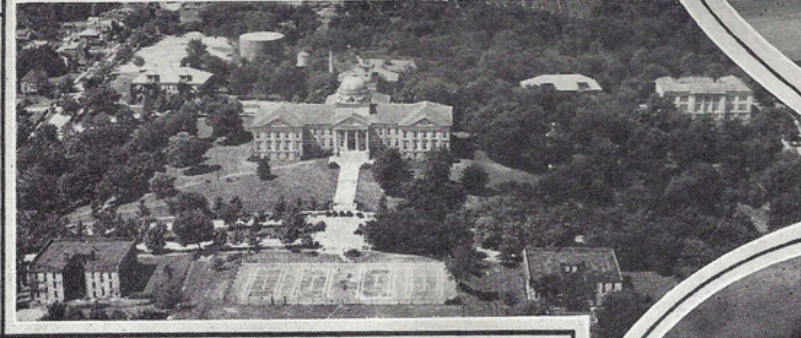
Below
Air view of the Southeast Missouri State Teachers College plant.



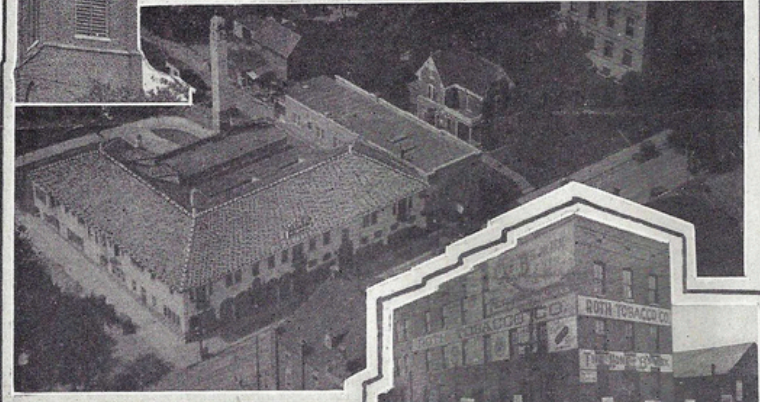
SOUTHEAST MISSOURIAN BUILDING
SALZELER BROTHERS
BUILT 1904
RENOVATED BY JAMES H. BROWN
THE GREAT MISSOURIAN BUILDING OF THE MISSOURIAN CITY OF THE STATE OF MISSOURI



Where the Church, the Home, the School, are
...the foundation of the community life.

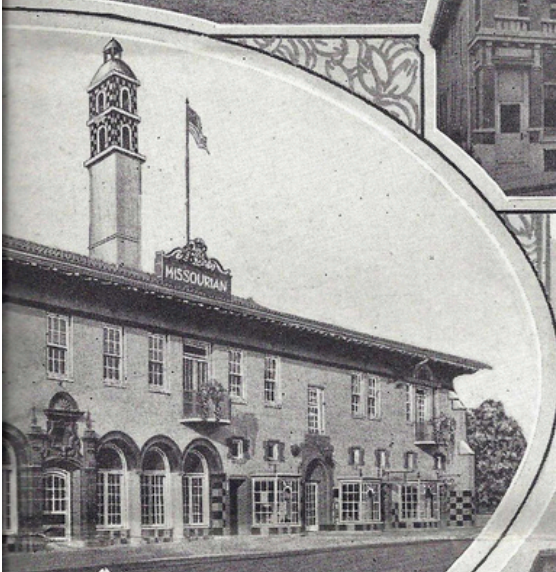
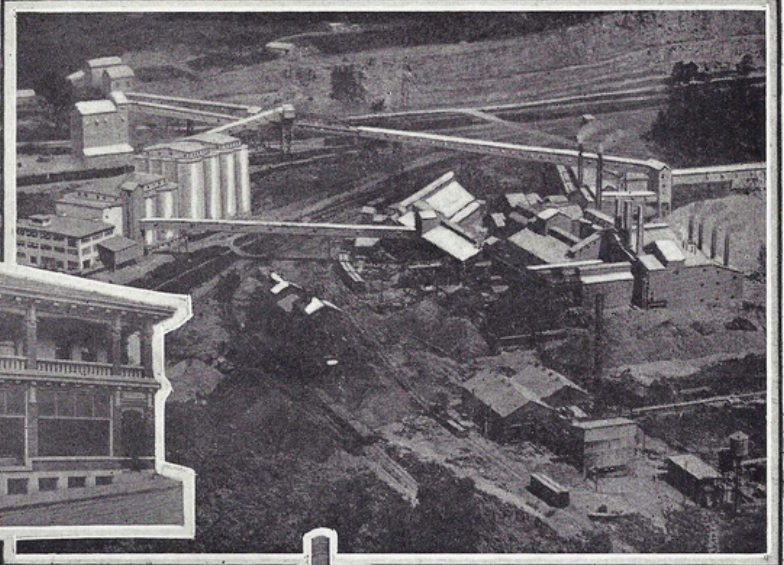
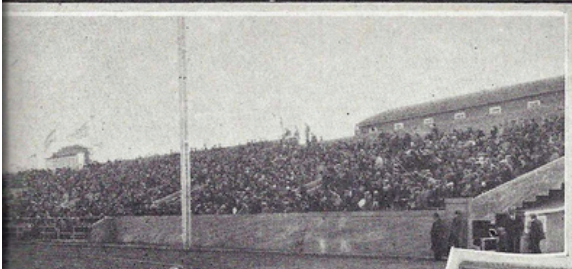


International Shoes Factory, one of the largest in Missouri.



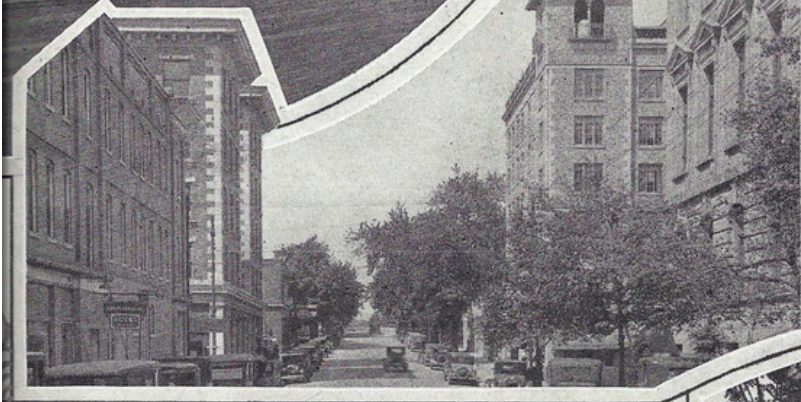
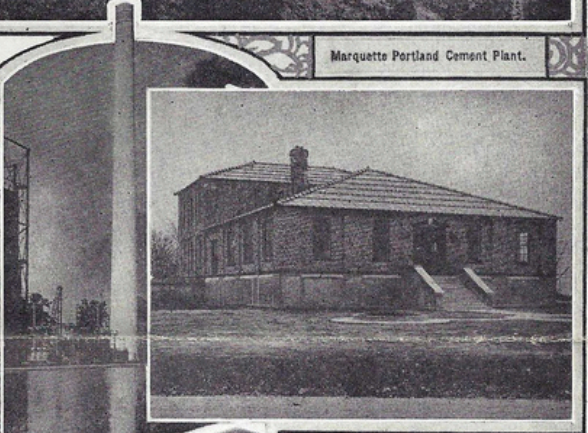
Looking down upon The Missourian Building.
Largest independent tobacco factory in Missouri.



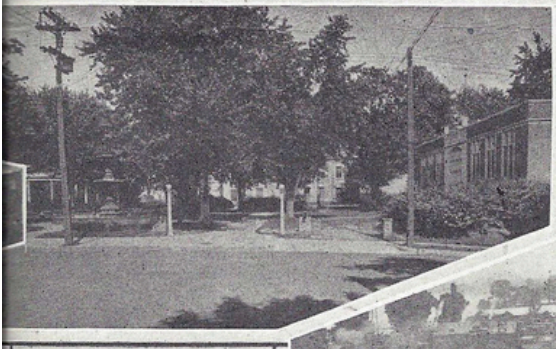
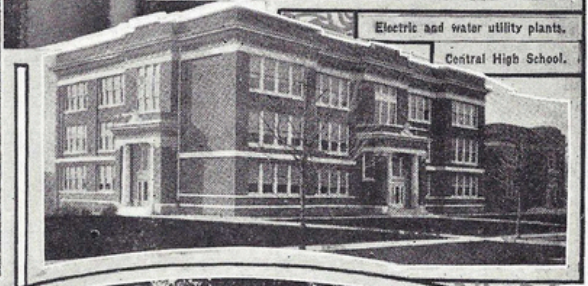


Chamber of Commerce Building.
Below
A Broadway Corner.

Marquette Portland Cement Plant.



Electric and water utility plants.
Central High School.



Right
The Missouriian
Building from
Courthouse Park.
Below
Railroad and
lumber industry
district.



Courthouse Park and Public Library.



Rotary  | **Membership**
Zones 30 & 31

OCTOBER MEMBERSHIP CHALLENGES

MEMBERS

Football season is in full swing,
Invite a sports fan to Rotary

**CLUB
& CLUB
EVENT**

Have a sporting event at a
meeting, football watch party,
plan a game night



Tools for Membership and New Club Month

Could your club use some help with membership? Is there a place in your area for a new club? Check out these courses in [The Learning Center](#):

- Strategies to Attract New Members
- Creating an Inclusive Club Culture
- Diversify Your Club
- Best Practices for Attracting New Members
- Online Membership Leads
- Starting a Club
- Nurturing New Clubs
- and more



Congratulations to the Washington Rotary Club for their support forming the Impact Washington Rotary Club, a new way for more members of the Washington community to "Do Good" in their community and the world.

Way to go, Montgomery County Rotary Club for their great job of recruiting new members. They have had two new members join and three prospects completing the process to join their club.

A big "Woohoo" to the Rotary Club of Cape Girardeau for jump starting the return of the Rotaract Club of Southeast Missouri on the campus of Southeast Missouri State University. Their application to Rotary International is in the works and they have 11 members at the time of this newsletter.

The efforts of students at Washington University St. Louis to bring back their Rotaract Club. They have begun the process to become a full Rotaract Club again. Thanks also to the Rotary Club of St. Louis for their support of the formation of this club.



District Governor Elect Ralph Zuke
District Governor Nominee Luke Kehoe
Past District Governors Margie Sammons, Rick Tinucci, Dave Robinette, and Stacey Self.

Ralph and Luke thank you for taking time away from your busy schedules to learn more about Rotary.

Margie and Rick, thank you for sharing your knowledge with new or upcoming leaders and for being a Learning Session Facilitator.

Dave and Stacey, thank you for coming to Huntsville for your learning sessions about the Council on Legislation. Dave is our district's representative to the Council on Legislation and Stacey is the alternate. Every three years, Rotarians meet at the [Council on Legislation](#) to review and vote on proposed changes to the legislation that governs Rotary. They consider enactments, which change Rotary's governing documents, and position statements by the Rotary International Board of Directors.



THANK YOU, ROTARIANS OF DISTRICT 6060!



District 6060

is hereby named a

ROTARY INTERNATIONAL GLOBAL PEACEBUILDER DISTRICT

in appreciation of its commitment to building sustainable peace by supporting the Rotary Peace Centers program and the peacebuilding and conflict prevention area of focus



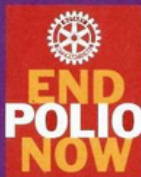
THANK YOU, ROTARIANS OF DISTRICT 6060, FOR ALLOWING US TO GIVE TO THE POLIO PLUS FOUNDATION AS A DISTRICT. REMEMBER, THE GATE FOUNDATION PROVIDES \$2 FOR EVERY \$1 ROTARIANS DONATE.

2023-24



District 6060

is presented a certificate of appreciation for its generous contribution of District Designated Funds to the End Polio Now: Countdown to History campaign. Together, we will fulfill our promise to the children of the world and eradicate polio.



Handwritten signature of Barry Rassin.

Barry Rassin
Chair, The Rotary Foundation Trustees

Handwritten signature of Gordon R. McInally.

Gordon R. McInally
President, Rotary International



Save these Dates!

Non-Member/Non-Spouse
Friends Get One Free Drink!

FALL CLUB SOCIALS

**ROCKWELL
BEER GARDEN**

3rd Thurs
Sept 19

**4HANDS
BREWING CO.**

4th Thurs
Oct 24



FRIDAY, Nov 29
Turkey Burp

SUNDAY, Dec 8
Holiday Lights Trolley



Time to Serve

Dear Rotary Club Officers--

Since you know your club leaders best, I'm asking for DGND (District Governor Nominee Designate) nominations from each of your clubs. What a great feather in your Club's hat that will be to have a District Governor!

The candidate would serve the remainder of this Rotary year (2024-25) as DGND and Annual Funds Chair for The Rotary Foundation. (The funds raised this year are distributed through grants in his/her governor year.)

The candidate needs to have served as Club President and be a Rotarian for at least seven years by July 1, 2027. Ideally, there would also be experience at the District 6060 level as an Assistant Governor or District Chairperson.

The progression to District Governor is DGND in 2024-25, District Governor Nominee (DGN) in 2025-26, District Governor Elect (DGE) in 2026-27, and then District Governor (DG) in 2027-28.

District 6060 covers mileage expenses during the DG year for all the club visits, District meetings, and Show Me Rotary meetings. Phone and internet charges are covered in for the DGN, DGE, and DG years. The Rotary International Conventions in DGE and DG years are also budgeted.

The nomination form is attached. It must be signed by your Club Secretary. Please forward it to me, Valerie Sorensen, Immediate Past District Governor at valerie.sorensen@yahoo.com.



WELCOME TO THE FAMILY OF *Rotary District 6060!*

Father Mike -- *Arnold*

Bob -- *St. Charles*

Nick -- *Bowling Green*

Kristin -- *St. Charles Sunrise*

**Steve and Travis --
*Cape Girardeau County***

**Brenda --
*Spirit of St. Louis County***

Ryan -- *Impact Washington*

Kaitlyn and Dan -- *Troy*

Chris -- *Jackson*

Natalie -- *Vandalia*

**Bree and Mary Kay --
*Montgomery County***

Lisa and Mike -- *Wentzville*



We are people of ACTION

Together we CONNECT

Together we SUPPORT EDUCATION

Together we GROW ROTARY

Together we have FUN



Louisiana Empowering Girls



Poplar Bluff



Louisiana Building Beds



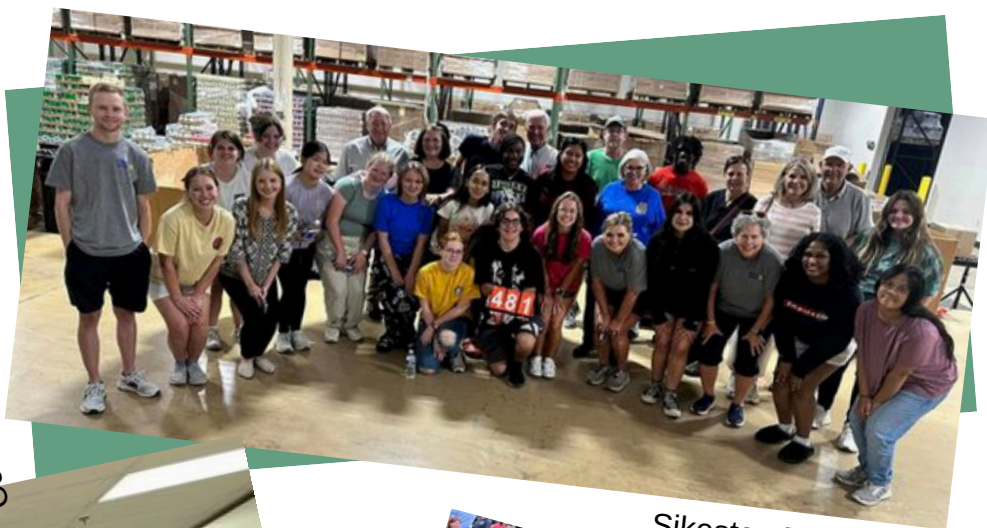
Cape Girardeau County



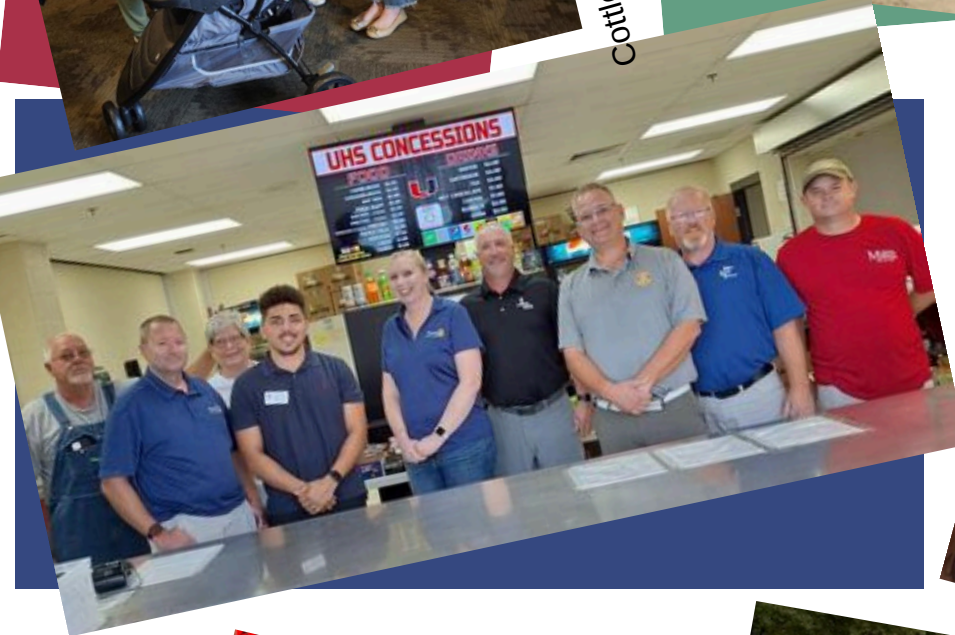
Spirit



Cottleville Weldon Spring



Sikeston Food Bank



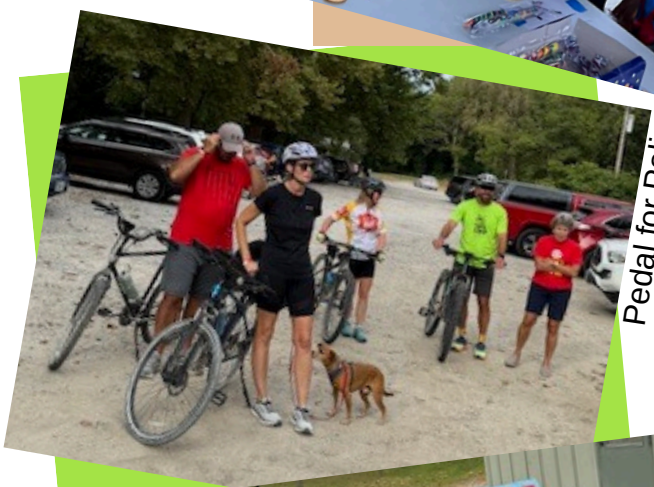
Union



Spirit



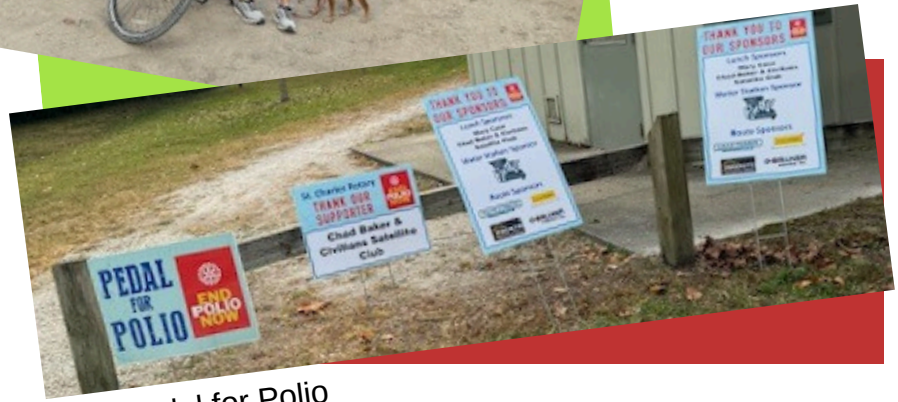
Washington



Pedal for Polio



DISTRICT CALENDAR LINK



Pedal for Polio



Jerry Nolen
District 6060 Governor 2023-24
(314)324-4060
jnolenrotary@gmail.com.com