


The **ROTARY ACTION PLAN**



**Together, we see a world
where people unite and take
action to create lasting
change — across the globe,
in our communities,
and in ourselves.**

The ROTARY ACTION PLAN



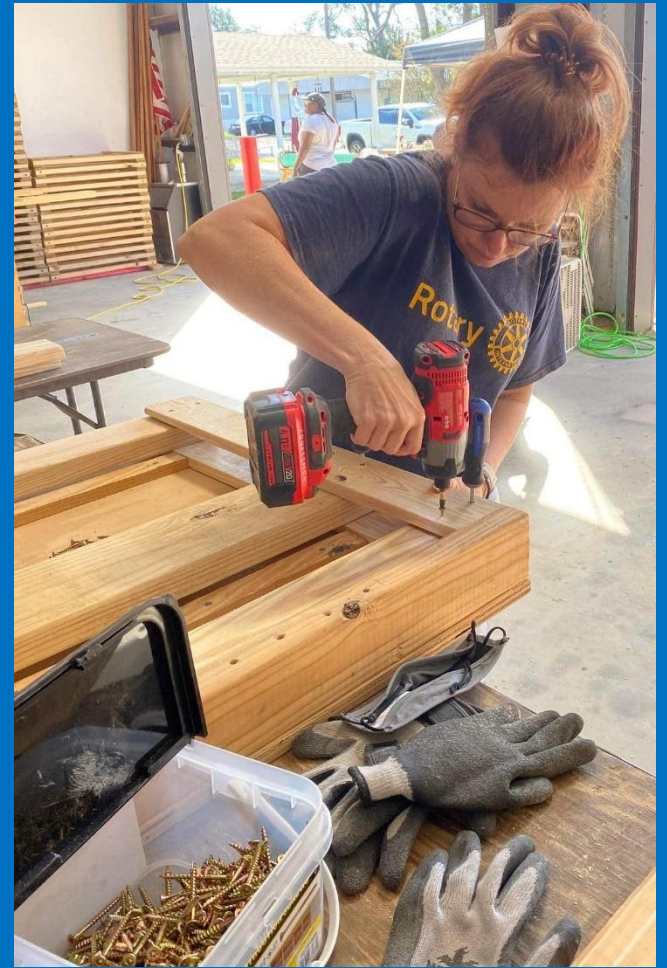
INCREASE OUR IMPACT



*"Hope lies in dreams, in imagination,
and in the courage of those who dare
to make dreams into reality."*

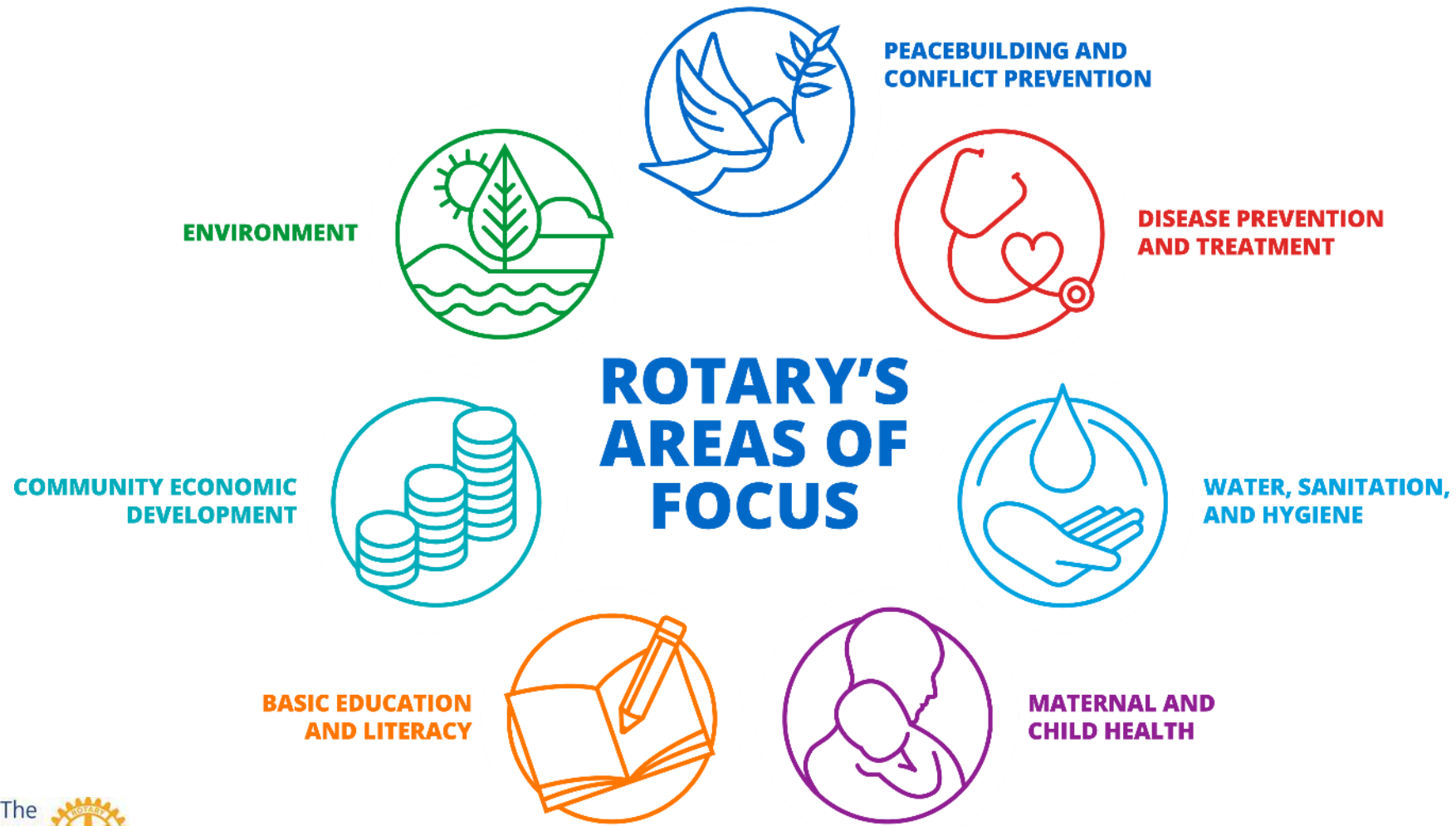








Seven Areas of Focus



What is your
passion?

FUNDRAISING AND THE ROTARY FOUNDATION



- The Rotary Foundation helps Rotary members to advance world understanding, goodwill, and peace by improving health, providing quality education, improving the environment, and alleviating poverty.
- Where does the money go?
→ Grant programs

GRANT TYPES

GLOBAL GRANTS

Support large international activities with sustainable, measurable outcomes in Rotary's areas of focus



DISTRICT GRANTS

Fund small-scale, short-term activities that address needs in a local community or communities abroad



PROGRAMS OF SCALE GRANTS

Benefit a large number of people or a broad geographical area and are awarded to one program per year



DISASTER RESPONSE GRANTS

Support relief and recovery efforts in areas that have been affected by disaster



2022-23 GRANT STATISTICS

District grants

473 grants
\$26 million

Global grants

1,092 grants
\$55 million

Disaster response grants

324 grants
\$15 million

Program of Scale grant

1 grant
\$2 million



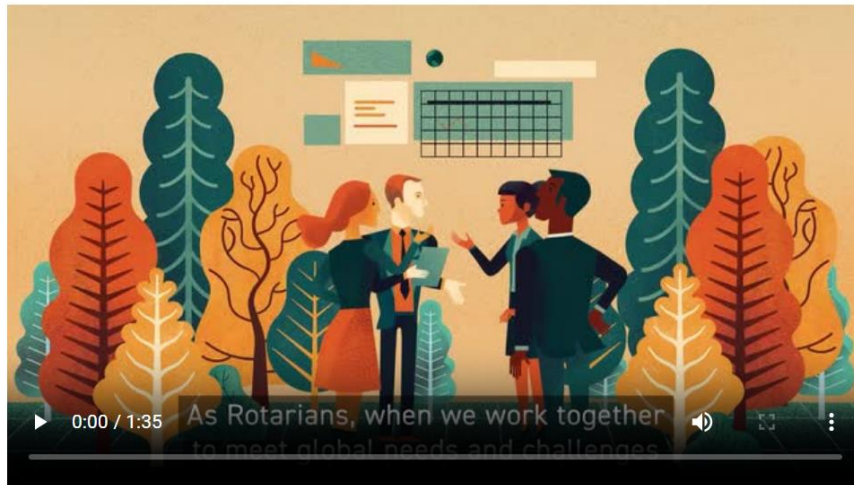
2021 Programs of Scale award recipient

The 2021 awardee, [Partners for a Malaria-Free Zambia](#), is a malaria elimination program that aims to reduce cases of malaria – especially severe malaria and death, particularly for pregnant women and children under 5 – in ten target districts in two provinces in Zambia. Reaching 1.2 million people, this program directly contributes to the nation-wide strategy put forth by the Zambian National Malaria Elimination Centre (NMEC).



2022 Programs of Scale award recipient

The 2022 awardee, [Together for Healthy Families in Nigeria](#), fostering the health of mothers and newborns, is working to reduce maternal and neo-natal mortality rate by improving health seeking behavior and quality care for pregnant women, mothers, and newborns in Nigeria. The partnership between Rotary Districts 1860 (Germany) and 9110, 9125, 9141, 9142 (Nigeria), the Rotary Action Group for Maternal and Child Health (RMCH), the federal and state ministries of health, and two professional medical associations are working to provide education and training for quality care, knowledge of healthy timing and spacing of pregnancies, and full adoption of the national system for death surveillance and response.



2023 Programs of Scale award recipient

Award recipient

[United to End Cervical Cancer in Egypt](#) is a Rotary member-led program that aims to ultimately reduce the number of cervical cancer cases in the greater Cairo region by implementing a four-year campaign to increase awareness about cervical cancer and how to prevent it. The implementation experience and data collected through this program will inform an evidence-based national strategy by the Egyptian government toward eliminating cervical cancer, considered one of the most preventable cancers.



2024 Programs of Scale award recipient and finalist

Award recipient

[Partners for Water Access and Better Harvests in India](#) is a five-year evidence-based program designed to improve livelihoods of over 60,000 rural farmers across four states in India through the implementation of sustainable agriculture and water management practices. Farming communities will gain knowledge and skills in resilient agricultural practices such as drip irrigation, layered cropping, and fruit tree cultivation. The program will also use rainwater harvesting systems such as check dams and retention ponds to increase groundwater availability for farming by 40%, improving crop yield and productivity.

South Africa Rotary Trade School



**District 6540 sponsored Global Grant:
Empowering women by
teaching them how to sew and
the business skills on how to
sell their goods to be self-
sustaining**



Rotary 

GG2231903

**The Rotary Foundation of Rotary International
Rotary Club of Delhi South Metropolitan D3011**

**Rotary International District 6820 & All Districts of Zone 31 & 32
A Memorial Grant in Memory of**

Rtn. Mark Anderson
District Governor 6820
at

**Government Middle School, Tauru, District Nuh, Mewat. Haryana
Govt Middle School, Chilawali, District Nuh, Mewat. Haryana**

Elizabeth Usovicz William Thurmond Jennifer Bucurel Manjit S. Sawhney Winnie Singh
RI Director Governor 2020-22 D6820 DRFC 6820 Prime Contact D3011 2022-23 President

District Grant Projects 23-24 totaled \$79,169 for Community Projects:

- Parks
- Playground Equipment
- Carport Shelter for a Food Bank
- Backpacks Stuffed with School Supplies
- Backpacks Stuffed with Food
- Chromebooks for Schools in Honduras



- Smoke and CO Detectors
- Bike Repair Stations on Bike Paths
- Mobility Carts for Polio Survivors

- Butterfly Pollinator Gardens
- Little Libraries

Dignity Packs for Women Rescued from Trafficking

FUNDRAISING AND THE ROTARY FOUNDATION



- The Rotary Foundation helps Rotary members to advance world understanding, goodwill, and peace by improving health, providing quality education, improving the environment, and alleviating poverty.
 - Where does the money go?
→ Grant programs
 - Where does the money come from?
→ These programs are only possible thanks to the generosity of hundreds of thousands of donors from around the world.

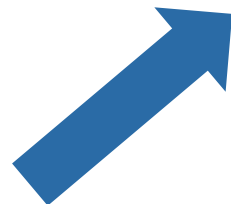


**Amount of total giving from
gifts of US\$1,000 or less to
The Rotary Foundation**

52%

FUNDRAISING AND THE ROTARY FOUNDATION

The
Rotary
Foundation



Fundraising

**Grant
Programs**

OUTSTANDING PERFORMANCE

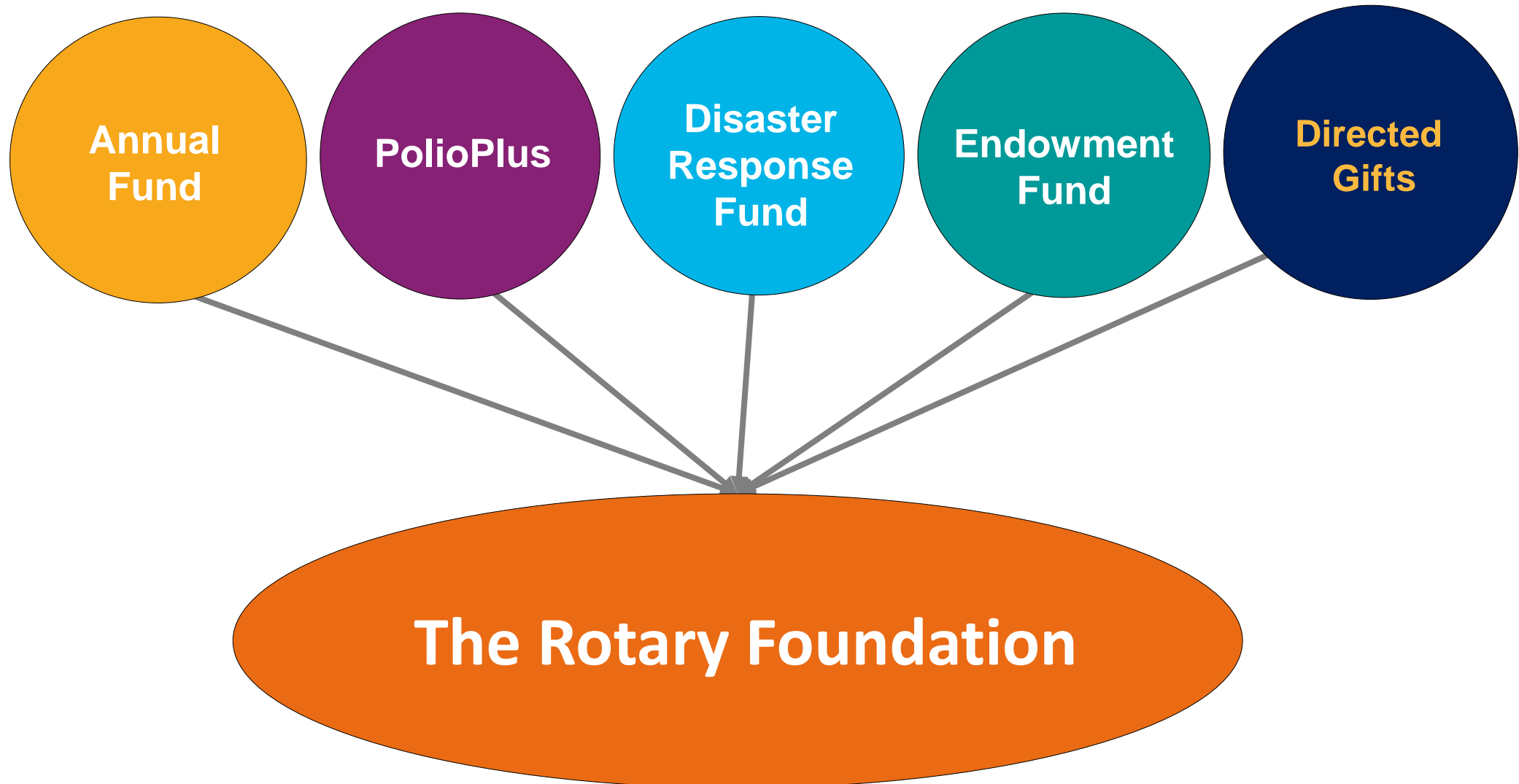
We're an organization you can support with confidence.

The Rotary Foundation continues to far exceed the standards set by independent charity-rating services like Charity Navigator.

We've earned **15** consecutive four-star ratings from Charity Navigator



WAYS TO GIVE



Annual Fund-Share

District Members make contributions

Contributions are invested over 3 years

Contributions are divided into ...

47.5% District Designated Fund

47.5% World Fund

5% expenses

- Use up to half for a district grant
- Fund global grants and receive World Fund match
- Donate to PolioPlus, Rotary Peace Centers, and more

- Supports grants and programs available to all districts

Rotary Foundation Sustaining Member - When you give \$100 or more per year to the Annual Fund.

Benefactor - When you include the **Endowment Fund** as a beneficiary of \$1,000 or more in your estate plans or when you donate \$1,000 or more to the fund outright.

Paul Harris Fellow - When you give \$1,000 or more to the Annual Fund, PolioPlus, or an approved Foundation grant. To recognize someone else as a Paul Harris Fellow, you can give that amount in their name.

Multiple Paul Harris Fellow - When you give additional gifts of \$1,000 or more to the Annual Fund, PolioPlus, or an approved Foundation grant.

Paul Harris Society member - When you elect to contribute \$1,000 or more annually to the Annual Fund, PolioPlus, or an approved Foundation grant.

Cumulative gifts to date or legally binding agreement

Major Donor

\$10,000⁺

Arch Klumph Society

\$250,000⁺

Documented promise of a future gift

Bequest Society

\$10,000⁺

Legacy Society

\$1,000,000⁺



Yes, I/we have made a commitment to The Rotary Foundation Endowment.

Name(s) to appear on recognition materials and/or for future publication: _____

Address: _____

City, state or province, country, and postal code: _____

Email: _____

Optional:

Rotary ID # _____ Rotary club name _____

Rotary district _____

Date(s) of birth _____

Home, business, and/or mobile phone _____

The spending portion of the gift shall be:

Unrestricted (World Fund)

Directed to:

SHARE (World Fund and District Designated Fund)

Rotary Peace Centers

One or more areas of focus:

- Peace and conflict prevention/resolution
- Disease prevention and treatment
- Water and sanitation
- Maternal and child health
- Basic education and literacy
- Economic and community development

Contact me at the phone number above to gift designation preferences.

Signature: _____ Date: _____

Signature: _____ Date: _____

The bequest will be funded by (some gift options are not available in all regions):

- Will or living trust
- Retirement plan beneficiary designation
- Life insurance beneficiary designation
- Donor advised fund
- Charitable remainder trust
- Other (please describe) _____

The gift to The Rotary Foundation is expected to be:

US\$ _____

(The dollar amount is used for recognition purposes; if no amount is selected we will default to Level One.)

Recognition options:

For those who commit \$10,000 or more, an engraved recognition crystal and one recognition pin per person will be automatically shipped to a home address.

My/our recognition preferences are noted below:

- I/we do not wish to receive an engraved crystal.
- I/we would like a pendant with the pin(s).
- Tell me more about special naming opportunities.
- Send all recognition materials to this address instead: _____

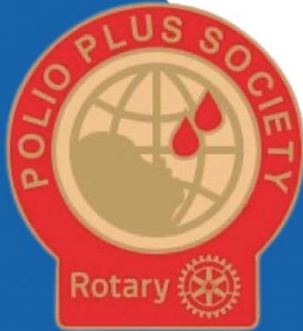
I/we have another request. (Please describe) _____

Please return this form and any supporting documents you wish to share that name Rotary as beneficiary. Contact information for your nearest Rotary office is featured on the back cover.

Polio
Eradication is
Rotary's #1
Humanitarian
Project



Every Club Goal - Raise \$1500+ for Polio
4 steps to talk about joining the PolioPlus Society
Go to EndPolio.Org for all information



Pin Example

Join on Rotary Direct with a recurring gift
at <https://EndPolio.org/Donate>



EndPolio.org/Donate

**PolioPlus
SOCIETY**

**Create
Awareness**

HYPE your
EVENT...on
social media,
newsletters,
and email

**Polio Video
& Stats**

Watch a Video
and share
polio update
to ask for
support

**PolioPlus
SOCIETY**

Explain how
to join and
facilitate the
process

Recognition

SHARE results
and THANK
your PolioPlus
Society
members

Rotary



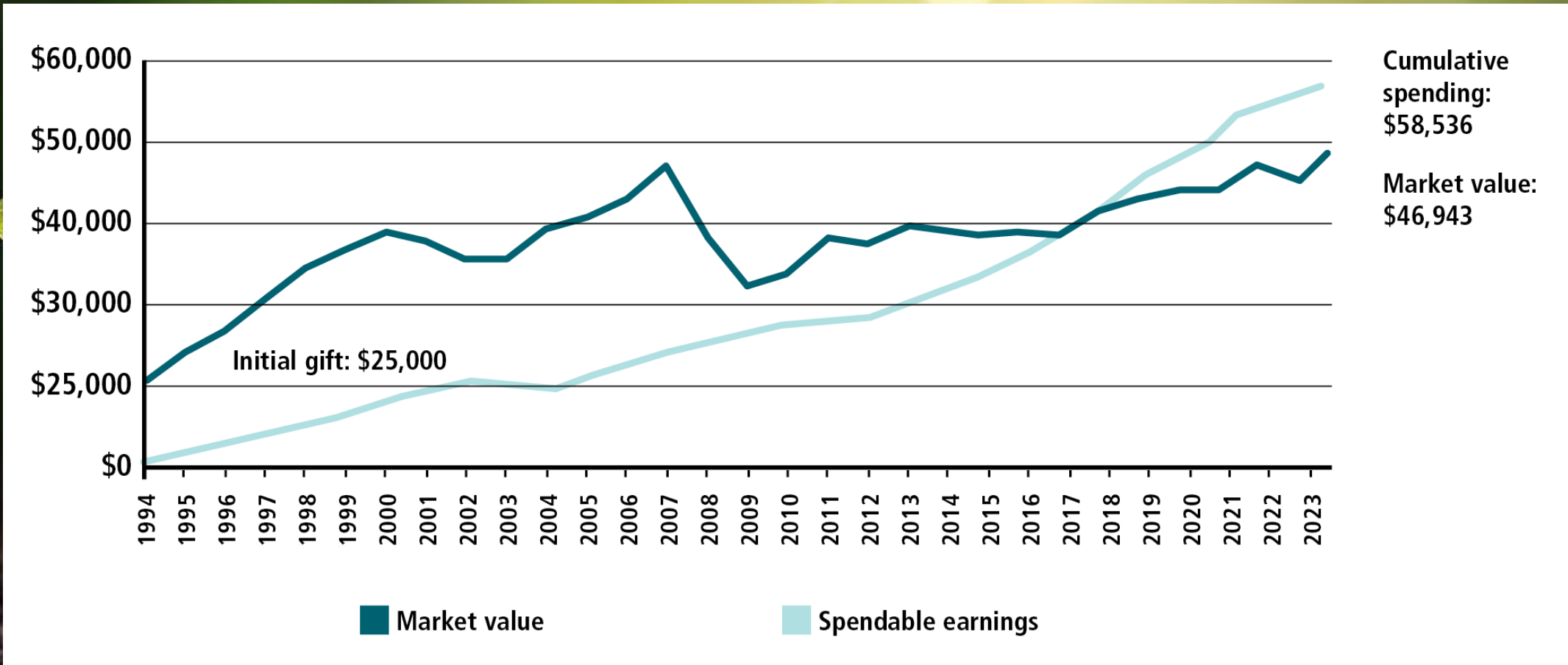
**END
POLIO
NOW**

WAYS TO GIVE – ENDOWMENT FUND



- Gifts to this fund are invested forever, and the **spendable earnings** are used to support the program that donors have designated:
 - **World Fund**
 - **SHARE**
 - **Peace Centers**
 - **Area of Focus**
- Gifts to the endowment can be made **today**, or **in the future** through a bequest.
- Option to create a **Named Endowed Fund**

WAYS TO GIVE – NAMED ENDOWED FUNDS



100% Foundation Giving Club - For clubs that achieve an average of \$100 in per capita giving and 100 percent participation, with every dues-paying member contributing at least \$25 to any or all of the following during the Rotary year: Annual Fund, PolioPlus Fund, approved global grants, or **Endowment Fund**.

Every Rotarian, Every Year Club - For clubs that achieve a minimum Annual Fund contribution of \$100 per capita during the Rotary year, and every dues-paying member must personally contribute at least \$25 to the Annual Fund during the year.

Top Three Per Capita in Annual Fund Giving - For the three clubs in each district that give the most, per capita, to the Annual Fund. Clubs that give at least \$50 per capita are eligible.

100% Paul Harris Fellow Club - For clubs in which all dues-paying members are Paul Harris Fellows. This is a one-time recognition.

How do you give?

Write a check

Mail to The Rotary Foundation
Give to Club Foundation Chair

Online

my.rotary.org

Rotary Direct

IGNITE app

Required Minimum Distribution from IRA
One-Time Charitable Gift Annuity from IRA
Appreciated Stock
Bequest from Your Will





Ways to Encourage Giving

Contests/Challenges

Change Jar

Club or District Matching Points

IGNITE Giving Day

Paul Harris Breakfast Club

Club Donates \$25 for a new member

Connect with their passion

QUESTIONS

